

ICESat-2 Algorithm Theoretical Basis Document for Atmosphere Gridded Products

Steve Palm

E. Thomas Northam

Version 3.2

September 1, 2021

Contents

Contents.....	2
Tables.....	3
Change Log.....	4
Items To Be Done.....	9
Terminology.....	10
Typographical Conventions.....	11
Scope.....	12
1.0 Introduction.....	13
2.0 Global and Polar Grids.....	16
3.0 Product Definitions.....	18
3.1 Global Fractions.....	18
3.1.1 Global Cloud Fraction.....	19
3.1.2 Combined Global Cloud Fraction.....	21
3.1.3 Global Aerosol Fraction.....	23
3.1.4 Global Clear Fraction.....	25
3.2 Total Column Optical Depth.....	27
3.2.1 Global (Over Water) Total Column Optical Depth.....	28
3.2.2 Expanded Global (Over Water) Total Column Optical Depth.....	30
3.3 Polar Cloud Fraction.....	33
3.3.1 High, Middle, Low and Total Cloud Fraction.....	33
3.3.2 Transmissive and Opaque Cloud Fraction.....	40
3.4 Blowing Snow Frequency.....	43
3.5 Apparent Surface Reflectivity (ASR).....	48
3.6 Ground Detection Frequency.....	51
3.7 Images of Gridded Fields.....	54
3.8 Minimum Number of Observations for Each Grid Box.....	55
3.9 Observations Grids.....	56
3.10 Product Statistical Values.....	59
4.0 Smoothing of Images.....	60
5.0 Product Formats.....	62

6.0 Product Production Considerations.....	80
6.1 ATL17 Monthly Atmosphere Gridded Product Content Control	81
6.2 ATL16 Weekly Atmosphere Gridded Product Content Control	82
7.0 Acronyms and Abbreviations.....	84
A.0 Attachments	85
A.1 Attachment A-1: Exhibit Rectangular Image with Statistical Data Label.....	85
A.2 Attachment A-2: Exhibit Polar Image with Statistical Data Label.....	86
A.3 Attachment A-3: Example Global Gridded Parameter Reference Layout	88
A.4 Attachment A-4: Example North Polar Gridded Parameter Reference Layout.....	90
A.5 Attachment A-5: Example South Polar Gridded Parameter Reference Layout	92

Tables

Table 1. Level-3B Atmosphere Gridded Parameters and Grid Type and Frequency.....	13
Table 2. Level-3B Atmosphere Gridded Products Parameters Grid Sizes and Dimensions	13
Table 3. Level-3B Atmosphere Gridded Products Linear Parameters Array Sizes and Dimensions.....	14
Table 4. Atmosphere Gridded Products Observation Grid Parameters, Sources, Applicable Parameters	57
Table 5. Gridded Products List of Gridded and Linear Parameters, Ancillary Data, and Images	63
Table 6. Gridded Products List of Ancillary Control Data	68
Table 7. Gridded Products List of Statistical Parameters	70
Table 8. List of Input Parameters from the ATL09 Level-3A Calibrated Backscatter Profile and Atmospheric Layer Characteristics Data	76
Table 9. Monthly ATL17 Data Product ATL09 File Composition by Month	81
Table 10. Weekly ATL16 Data Product ATL09 File Composition by Month and Week	83

Change Log

August 21, 2018: Corrected the logic in Section 3.3.1. Changed the units in Tables 2 and 3 to fraction from percent. [Update note: former Tables 2 and 3 are now contained the current Table 5.]

February 26, 2019: Corrected mistake in blowing snow description, Section 3.4. Changed “if *bsnow_h* is greater than or equal to -2” to “if *bsnow_con* is greater than or equal to -2”

May 2019: in Section 3.1 added the check of “*layer_attr*” when constructing the global cloud fraction grid.

August 2019: Added Section 3.1.1 that defines a new parameter (Global Aerosol Fraction) to be added to ATL16 and ATL17. Added Section 3.8 which defines the new control parameters *week_obs_minimum* and *month_obs_minimum*, and replaced old Section 4.0 with a new section on smoothing of the images that are made from the data grids. In Section 4.0 the new control parameters *smooth_grid* and *center_weight* are described. Changed old Section 4.0 to Section 5.0. Added Section 6.0.

September 2019: ATBD Version 2.1. Added observation grids to both ATL16 and ATL17. Specified that smoothing is to be done only on the data to produce the images. The atmosphere gridded data parameters written on the product are not smoothed.

December 5, 2019: ATBD Version 2.2a. Modifications to certain entries in Section 5.0 Table 2 and Table 3 content. Clarification notes added to Sections 3.1, 3.1.1, and 3.2. Corrections made to text in Section 3.3.1 for definition of low, middle, and high layer altitude boundaries; similar corrections made to Section 5.0 Tables 2 and 3. [Update note: former Tables 2 and 3 are now contained the current Table 5.]

April 30, 2020: ATBD Version 3.0. Section 2: modified the grid sizes for the polar plots for both ATL16 and 17. Modified the grid size of the ATL16 global grid. Added Section 3.10 to identify the data parameters for which the average values would be computed, written to the product and displayed on the image. Tables 2 and 3 updated to show the average values written to the product. Section 3.2: change of title to total column optical depth image. All changes since Version 2.2a are in red font.

May 7, 2020: ATBD Version 3.1 DRAFT. Contains changes to expand Section 3.10 Product Averages from reporting just the parameter average values to become Section 3.10 Product Statistical Values to include the gridded parameter minimum, maximum, and standard deviation values in addition to the average (now the mean) value. The modifications to accommodate the Section 3.10 requirements are also made to Tables 2 and 3 in Section 5.0. [Update note: former Tables 2 and 3 are now contained the current Table 5.]

May 12, 2020: Modifications to Tables 2 and 3 in Section 5.0, to divide the tables into Tables 2.1 and 3.1 containing the original content, and setting up Tables 2.2 and 3.2 to contain the newly added statistical reporting parameters.

June 3, 2020: ATBD Version 3.1b DRAFT. Added sub-section headings 5.1, 5.2, 6.1, and 6.2 for delineating ATL16 and ATL17 product information. Expanded parameter sections to include prototype

code statements to illustrate and enumerate the textual specifications. Additional material and annotations are included in this edition, including one additional table (Table 2) that collects together information on monthly and weekly global and polar grid cell sizes and associated array sizes.

References for the monthly and weekly global and polar grid cell size are modified to be expressed as “longitude-size by latitude-size” in degrees (e.g., 1.5x0.5 degrees for ATL17 polar grid cell size). This is done for consistency with grid dimensioning and indexing (i.e., (i,j) where i = the longitude size or index and j = the latitude size or index.

A new table, Table 3, is added for observation grid information. Original Table 2 that was divided into Table 2.1 and 2.2, is relabeled to Tables 4.1 and 4.2. Correspondingly, original Table 3 that was divided into Table 3.1 and 3.2 now becomes Tables 5.1 and 5.2. Original Table 4 becomes Table 6, and Table 5 becomes Table 7.

June 10, 2020: Version 3.1c DRAFT. Prior ATBD review comments are incorporated in this version.

Table 3 has been added to apply the new weekly and monthly global and polar longitude and latitude grid cells sizes to the linear arrays pertinent to longitude and latitude steps.

A major change to this version is changes to polar and global grid sizes for both weekly and monthly (polar only) products. Prior versions used a 1x1 degree grid for all monthly (ATL17) products and a 2x2 degree grid for all weekly products (ATL16). This version incorporates different grid sizes as shown in Table 2.

The Section 1.0 statement that the weekly ATL16 and the monthly ATL17 atmosphere gridded products contained the same parameters at different dimensions and frequencies, the addition of the new Table 2 containing the new grid longitude and latitude size and dimensions, and now the further addition of a new Table 3 showing the impact of the longitude and latitude sizes and dimensions of the linear arrays (i.e., single dimensions), now provide the opportunity to reduce the product description tables in Section 5.0. Consequently, Sub-section headings 5.1 and 5.2 have been removed, and the dual table pairs of Tables 4.1 and 4.2 and 5.1 and 5.2, have been replaced with Tables now numbered as Table 5, Gridded Products List of Gridded and Linear Parameters, Ancillary Data and Images, and Table 6, Gridded Products List of Statistical Parameters.

Table 5 has been expanded to use the ATL16 and ATL17 global and polar grid dimension sizes in Table 2, and the linear array dimension sizes in Table 3 to discriminate the weekly gridded parameter array dimensions and linear array dimensions from those of the monthly gridded parameter arrays and linear arrays in this general table.

The previous Table 3, Gridded Products Observation Grid Parameters has now become Table 4. The previous Table 6, ATL17 Data Product ATL09 Composition by Month has become Table 7, and previous Table 7, ATL16 Data Product ATL09 File Composition by Month and Week has been relabeled as Table 8.

A major change now is the addition of the high-rate blowing snow frequency atmosphere gridded parameter in addition to the existing blowing snow frequency that was based upon usage of the low-rate profile blowing snow height and blowing snow confidence.

June 11, 2020: content changes to Section 3.4 text to clearly indicate the incidence now of both the low-rate and high-rate blowing snow frequency gridded parameters.

June 12, 2020; and June 15, 2020: Version 3.1: Tables 5 and 6 are supplemented with a new table that now becomes Table 6, and the existing Table 6 becomes Table 7. Tables 7 and become Tables 8 and 9.

Statements were added to reference the global parameter array index origin (0,0) to the lower left corner of the grid layout and array. Similar notations were added to reference the South polar parameter array index origin (0,0), also to the lower left corner of the grid layout and array. The North polar parameter array index origin (0,0) mirrors the South polar array with reference at upper left corner of the grid layout and array. Graphic images and text have been added as Attachments A-3, A-4, and A-5.

Control parameters, that had been omitted in the recent set of updates, have been returned in Table 6. Group identification headers have been added back in to Tables 5, 6, and 7. Parameter names from these tables are now included as references within each algorithm description section. Final text additions and comments have been included or addressed.

Removal of red and blue font colors used to designate sets of changed text or added content. Incorporation of font color and type-setting to highlight and increase visibility of formal input ATL09 profile product parameters and output ATL16/ATL17 gridded product parameters.

June 19, 2020: Version 3.1: Added “red” font color back in to original state to discriminate changes.

July 16-17, 2020: Version 3.1 [*Interim*]: Changes to Table 4.

July 23, 2020: Version 3.1 [*Interim*]: Changes to Table 4.

August 12, 2020: Version 3.1 [*interim*]: change “*asr_obs_grid*” to “*global_asr_obs_grid*” in Table 5. to match the revised entry in Table 4.

January 6, 2021 (January 12, 2021): Version 3.2 [*interim*]: document delivered with revisions proposed to Global Cloud Fraction (Section 3.1) and [Global] Total Column Optical Depth [over Water] (Section 3.2). The changes to Sections 3.1 and 3.2 included the addition of two new control parameters per section. New Section 3.1.2, Global Clear Fraction was added. It is noted that all special color coding under Typographical Conventions was removed.

January 28, 2021: Version 3.2 [*Interim*]: the January 6/January 12, 2021 document edition was modified to restore the color coding under Typographical Conventions. Additional classifications were added to the Typographical Conventions section to accommodate input data, output data, and control data parameters within the red color font paragraphs to clearly delineate input data parameters and output

data parameters as well as new control parameters. Global Clear Fraction gridded parameter and image added to Table 5. New control parameters were added to Table 6. Table 7 was updated to include the global clear fraction statistical parameters. Changes to affected proto-code blocks had not been made.

February 1-March 3, 2021: Version 3.2 [DRAFT]: as a result of a review of the January 28, 2021, Version 3.2 [Interim] document on that same date, the decision was made to add a new gridded parameter called "Combined Global Cloud Fraction". This parameter supplements the existing Global Cloud Fraction parameter (computed from the output of the DDA to detect clouds directly from the backscatter) with the ASR cloud detection method, which uses the magnitude of ASR and the estimated actual surface reflectance to detect clouds. The algorithm for the new combined global cloud fraction expands the cloud layer counting from ASR in addition to DDA cloud layers. This new combined global cloud fraction (from DDA and ASR) roll-out eliminates the need for the control parameter *include_asr_clouds*.

In addition, a new gridded parameter called Expanded Global Total Column Optical Depth implements code to replace the INVALID over-water ASR optical depth profile values with formulaic estimated values. The addition of the expanded global total column optical depth over water gridded parameter eliminates the need for the control parameter *gen_cloud_od*.

A reorganization of Section 3.1 Global Cloud Fraction with sub-sections 3.1.1 Global Aerosol Fraction and 3.1.2 Global Clear Fraction is submitted to provide an orderly form to now present Global Cloud Fraction (from DDA), Global Aerosol Fraction, and the new Global Clear Fraction and Combined Global Cloud Fraction (from DDA and ASR) as sub-sections under the revised group heading of Global Fractions.

A reorganization of Section 3.2 Total Column Optical Depth will now include subsections Total Column Optical Depth over Water and the Expanded Total Column Optical Depth over Water.

March 9, 2021: Version 3.2 [DRAFT]: repairs to table of Contents indentation; fix several spelling errors.

March 16, 2021, Version 3.2 [DRAFT]: review and invocation of preferred nomenclature, terminology and references for new products by the ATBD Lead.

March 17, 2021, Version 3.2 [DRAFT]: review and assimilation of March 16, 2021, submitted content changes; completion of in-kind changes not included in the March 16, 2021, revisions. Submitted for "final" disposition consideration.

March 18-19, 2021, Version 3.2 [DRAFT]: update issued to both correct and clarify the function of the Section 3.1.2 Combined Global Cloud Fraction gridded parameter algorithm. Additional content is supplied for Section 3.2 Total Column Optical Depth. Closing statements previously missing added back into the pseudocode blocks.

March 31-April 2, 2021, Version 3.2 [DRAFT]: added content for improved reference and clarity.

April 3-April 9, 2021, Version 3.2 [DRAFT]; continue progression of suggested modifications and clarifications to document content.

April 9-May 11, 2021; Sections 3.1.1, 3.1.2, 3.1.3, 3.1.4, 3.2.1, 3.2.2, 3.3.1, 3.3.2, 3.4, 3.5, 3.6: in response to collection of suggestions to customize the content of the algorithm description sections with a uniform ordering and presentation of key elements at the top of each section or sub-section, an “Atmosphere Gridded Parameter Summary” detailed information block has been inserted at the top of each of the primary section and sub-sections as appropriate.

June 17, 2021; Sections 3.2, 3.2.2: basis ATL09 data test with the v1.3 developmental atlas_l3b_atm PGE demonstrated that current logic for the Expanded Global (Over Water) Total Column Optical Depth algorithm for the replacement of over water (*column_od_asr_qf* () =4, for over water) INVALID ASR column optical depth profile values (*column_od_asr* () = INVALID) as the condition for using the calculation formula to compute an estimated cloud column optical depth (*est_col_od_asr_loc*) as a replacement value for the INVALID *column_od_asr* profile value would never be performed as the ASR column optical depth profile values (*column_od_asr* ()) will always be VALID when the ASR column optical depth quality flag indicates the profile observation is over water (*column_od_asr_qf* () =4).

June 17, 2021; Sections 3.2, 3.2.2: ATBD Lead submitted Expanded Global (Over Water) Total Column Optical Depth algorithm change: the over ocean surface type profile (*surf_type* (ocean,) =1) is substituted for the over-water ASR column optical depth quality flag (*column_od_asr_qf* () =4), and is now paired with the test for the INVALID ASR column optical depth profile value (*column_od_asr* () = INVALID). The common occurrence of the over ocean surface type profile (*surf_type* (ocean,) =1) and the INVALID ASR column optical depth profile value (*column_od_asr* () = INVALID) are used to invoke the calculation of the estimated cloud column optical depth value as a replacement for the INVALID ASR column optical depth profile value in the accumulation of column optical depth values used in the computation of the average Expanded Global (Over Water) Total Column Optical Depth atmosphere gridded parameter.

June 28, 2021; Sections 3.2, 3.2.2: following examination of Expanded Global (Over Water) Total Column Optical Depth atmosphere gridded data, the decision was made to reduce the size of the control parameter generate cloud column optical depth maximum (*gen_cloud_od_max*) from 100 down to 35 to reduce the magnitude of the resultant *expanded_global_column_od* (,). The *gen_cloud_od_max* control parameter is used in the calculation formula for the estimated cloud column optical depth value computed as the replacement of the INVALID ASR column optical depth profile value and is used in the accumulation of column optical depth values used in the computation of the average Expanded Global (Over Water) Total Column Optical Depth atmosphere gridded parameter. The scaling for the corresponding product image will be retained at the 0.0 to 25.0 range.

Items To Be Done

Reference	Description
2.0-1	Add sub-label for control parameter <i>gen_cloud_od_max</i> "gen_cloud_od_max=99" to the Expanded Global (Over Water) Total Column Optical Depth image <i>expanded_global_column_od_img</i> in the ATL16/ATL17 weekly/monthly atmosphere gridded products. Requires changes to "plot_atl16.py" Python code.
2.0-2	Supplement the Expanded Global (Over Water) Total Column Optical Depth module "expanded_global_column_od_mod.f90" to include the "inland water" surface type [<i>surf_type</i> (inland_water,)=1] in addition to the existing "ocean" surface type [<i>surf_type</i> (ocean,)=1] with the INVALID ASR column optical depth profile parameter [<i>column_od_asr</i> ()=INVALID] condition as triggers for the calculation of the estimated cloud column optical depth <i>est_cloud_col_od</i> as a replacement value for the INVALID ASR column optical depth profile parameter used in the gridded data accumulation. NOTE: the estimated cloud column optical depth parameter is eventually to be replaced with an ICESat-2 data-derived global ancillary to supply the data for gridded data accumulation processing,
2.0-3	Add the new global gridded parameter identified as ASR Global Cloud Fraction deriving cloud fraction using the ASR cloud probability profile data, <i>asr_cloud_probability</i> ().

Terminology

The term “INVALID” appears throughout the text of this document relative to values encountered in the input process data associated with ICESat-2 ATLAS Level-3A data obtained from the ATL09 standard data product, and the output atmosphere gridded standard data products ATL16 and ATL17. In a generic context INVALID represents missing or empty input profile data, and missing or empty output gridded parameter cells. The class of INVALID values pertaining to missing or empty profile values or missing or empty gridded parameter cell values are identified in the input HDF5 products or output HDF5 products by the Name “_FillValue”. In application, INVALID or _FillValue locations contain numerical values that are “huge”, i.e., the largest number (not infinity) representable within the 1-byte, 2-byte, and 4-byte integer type, the 32-bit (4-byte) floating point (or real) type, or 64-bit (8-byte) real (or double precision) type. The bottom line here is this, INVALID values should be ignored and exempted from any data usage or algorithm processing consideration.

Used within the product description tables, “N/A” generally means “Not Applicable”.

Parentheses “()” are used with the presentation of ATL09 profile parameters to indicate a data array at the profile rate (i.e., 25 Hz for high-rate profile data, or 1 Hz for low-rate profile data). The notation “(,)” or “(,n)” would be used to indicate a 2-dimensional profile parameter array. As examples, the high-rate (25 Hz) profile parameter “*cloud_flag_atm*” will be presented as “*cloud_flag_atm ()*”; the 2-dimensional profile parameter “*layer_attr*” will be presented as either “*layer_attr (,n)*” or “*layer_attr (,)*”.

For the output products ATL16/ATL17, two-dimensional atmosphere gridded parameters will generally be represented with the indices (i,j) or (,). Single-dimensional linear parameter arrays will generally be represented with indices (i) and (j), or simply (.). As examples, “*global_cloud_frac*” will appear as “*global_cloud_frac (i,j)*”, “*global_aerosol_frac*” may be represented as “*global_aerosol_frac (,)*”, “*global_grid_lon*” will appear as “*global_grid_lon (i)*”, and “*spolar_grid_lat*” will appear as “*spolar_grid_lat (j)*” or “*spolar_grid_lat ()*”.

Typographical Conventions

Italics are used to specifically denote parameters identified from the input ATL09 calibrated backscatter profile and atmospheric layer characteristics data products or to be contained within the output weekly ATL16 or monthly ATL17 atmosphere gridded data products. For example: the *solar elevation* parameter is obtained from the ATL09 product, and the *data type flag* is written out to the ATL16 and ATL17 data products. Note that generic atmosphere gridded parameter references such as “global cloud fraction” are not italicized.

Application of font color and type-setting to highlight and increase visibility (contrast) of formal input ATL09 profile product parameters and generated output ATL16/ATL17 gridded product parameters.

product parameter name forms	color	type set	use	product	dimension	source/destination description
<i>cloud_flag_atm</i> <i>cloud_flag_atm ()</i>	blue 0000FF	<i>italics</i>	input	ATL09	single-dimension profile array	Level-3A calibrated backscatter profile and atmospheric layer characteristics
<i>layer_attr</i> <i>layer_attr (,)</i> <i>layer_attr (,n)</i>	blue 0000FF	<i>italics</i>	input	ATL09	two-dimension profile array	Level-3A calibrated backscatter profile and atmospheric layer characteristics
<i>data_type_flag</i>	dark green 006600	<i>italics</i>	input/output	control ATL16/ ATL17	single location variable	Level-3B atmosphere gridded products
global_cloud_frac global_cloud_frac (,) global_cloud_frac (i,j)	dark green 006600	none	output	ATL16/ ATL17	two-dimension grid array	Level-3B atmosphere gridded products
global_grid_lon global_grid_lon () global_grid_lon (i)	dark green 006600	none	output	ATL16/ ATL17	single-dimension grid array	Level-3B atmosphere gridded products

It is noted that the usage of font color and type-setting is not applied to the generic atmosphere profile parameters in text such as “solar elevation”, “surface signal”, or “blowing snow height”, generic atmosphere gridded parameters presentation such as “Global Cloud Fraction” or “north polar ground detection frequency”, or for the informal generic terms appearing in the pseudocode exhibits such as “low-rate blowing snow detection grid” or “high-rate blowing snow frequency polar grid”.

Scope

The scope of the delivery of this edition of the **ICESat-2 Algorithm Theoretical Basis Document for Atmosphere Gridded Products** point to the following ICESat-2 Project element targets:

L3B ATM ATBD Version Identification:	Version 3.2
L3B ATM ATBD Version Date:	<i>tentative August 2, 2021</i>
ASAS atlas_l3b_atm PGE Version Identification:	Version 1.3
ASAS atlas_l3b_atm PGE Version Date:	<i>July 1, 2021</i>
ASAS ATL16 / ATL17 Product Version Identification:	Version 1.3 (v1.3)
ASAS Delivery Package Version Identification:	ASAS v5.5
ASAS Delivery Package Release:	Release 005
ASAS Delivery Package Version Date:	<i>July 28, 2021</i>
SIPS Build Version Identification:	SIPS Build 7.0
SDMS ATL16 / ATL17 Data Delivery Identification:	release 4 (rel004)
NSIDC ATL16 / ATL17 Data Archival Version:	V4 (V04)

The scope of the delivery information for the next edition of the **ICESat-2 Algorithm Theoretical Basis Document for Atmosphere Gridded Products** are projected in following ICESat-2 Project element targets:

<i>next</i> L3B ATM ATBD Version Identification:	Version 4.0
<i>next</i> L3B ATM ATBD Version Date:	<i>TBD</i>
<i>next</i> ASAS atlas_l3b_atm PGE Version Identification:	Version 2.0
<i>next</i> ASAS atlas_l3b_atm PGE Version Date:	<i>TBD</i>
<i>next</i> ASAS ATL16 / ATL17 Product Version Identification:	Version 2.0 (v2.0)
<i>next</i> ASAS Delivery Package Version Identification:	ASAS v6.0
<i>next</i> ASAS Delivery Package Version Release:	Release 006
<i>next</i> ASAS Delivery Package Version Date:	<i>TBD</i>
<i>next</i> SIPS Build Version Identification:	SIPS Build 8.0
<i>next</i> SDMS ATL16 / ATL17 Data Delivery Identification:	release 5 (rel005)
<i>next</i> NSIDC ATL16 / ATL17 Data Archival Version:	V5 (V05)

1.0 Introduction

The atmosphere gridded products consist of the Level-3B (L3B) products ATL16 and ATL17. ATL16 will be a weekly product and ATL17 will be generated monthly. The same atmospheric information will be on both products. The content of both products will include: global cloud fraction, combined global cloud fraction, global aerosol fraction, total clear fraction, total column optical depth over water, expanded total column optical depth over water and ocean, polar cloud fraction, high-rate and low-rate blowing snow frequency, apparent surface reflectivity, and ground detection frequency. The polar cloud fraction will be broken into six (6) separate grids representing high, low, middle, transmissive, opaque, and total cloud fraction for each hemisphere.

The Hierarchical Data Format (HDF) product files will contain the gridded fields of the above parameters as 2-dimensional arrays and also images of these fields plotted on a map of the respective region. ATL16 weekly products will be generated on a 3x3-degree global grid and 3x1-degree polar grids, and ATL17 monthly products on a 1x1 degree global grid and 1.5x0.5-degree polar grids. Table 1 lists the various atmospheric parameters contained in the L3B products, the type of grid used and the frequency for each. Table 2 provides summary details of the grid cell longitude and latitude sizes and the array dimensions associated with the weekly and monthly global and polar atmosphere gridded parameters. Table 3 applies the grid cell longitude and latitude sizes to weekly and monthly global and polar linear (single-dimensioned) longitude and latitude arrays.

Table 1. Level-3B Atmosphere Gridded Parameters and Grid Type and Frequency

Atmospheric Parameter	Type of Grid	Frequency		Section
		ATL16	ATL17	
Global Cloud Fraction: existing (from DDA)	Global	weekly	monthly	3.1.1
Combined (from DDA+ASR)	Global	weekly	monthly	3.1.2
Global Aerosol Fraction	Global	weekly	monthly	3.1.3
Global Clear Fraction	Global	weekly	monthly	3.1.4
Total Column Optical Depth: existing TCOD over Water	Global	weekly	monthly	3.2.1
Expanded TCOD over Water	Global	weekly	monthly	3.2.2
Polar Cloud Fraction	Polar	weekly	monthly	3.3
Blowing Snow Frequency	Polar	weekly	monthly	3.4
Apparent Surface Reflectivity	Global and Polar	weekly	monthly	3.5
Ground Detection Frequency	Global and Polar	weekly	monthly	3.6

Table 2. Level-3B Atmosphere Gridded Products Parameters Grid Sizes and Dimensions

ATM Product	Coverage Period	Grid Type	Grid Size (degrees)			Grid Dimension (i,j) = (lon,lat)
			Longitude	Latitude	Combined	
ATL16	weekly	Global	3.0	3.0	3.0x3.0 or 3x3	(120,60)
ATL16	weekly	Polar	3.0	1.0	3.0x1.0 or 3x1	(120,30)
ATL17	monthly	Global	1.0	1.0	1.0x1.0 or 1x1	(360,180)
ATL17	monthly	Polar	1.5	0.5	1.5x0.5	(240,60)

Table 3. Level-3B Atmosphere Gridded Products Linear Parameters Array Sizes and Dimensions

ATM Product	Coverage Period	Grid Type	Array Size (degrees)		Longitude Dimension (i) = (lon)	Latitude Dimension (j) = (lat)
			Longitude	Latitude		
ATL16	weekly	Global	3.0	3.0	(120)	(60)
ATL16	weekly	Polar	3.0	1.0	(120)	(30)
ATL17	monthly	Global	1.0	1.0	(360)	(180)
ATL17	monthly	Polar	1.5	0.5	(240)	(60)

A control parameter will be installed as a default within the code, with an override read in from the execution control file that will establish whether both night and day data are included in the generation of the product or only night data. The night only data is determined from the ATL09 parameter *solar_elevation* applied as filter. If it is less than 0.0, then it is considered night data. This control parameter will be included on the product as parameter *data_type_flag* within the product group *"/ancillary_data/atmosphere"*. A value of zero (0) means to use both day and night data to generate the products, and one (1) will mean to use only night data. The coded default value will be zero (0) for processing day and night data; a control file override value of one (1) will process only night data.

In general, the atmosphere gridded parameters derive from selected parameters collected from the ATL09 Level-3A calibrated backscatter profile and atmospheric layer characteristics data. The gridded parameters are rational, expressed as the ratio of a logically-filtered profile observation count or ATL09 parameter summation as an accumulated numerator value for each cell in a particular grid, divided by a denominator that is total count based primarily on 25 Hz high-rate profile data for each cell or on the accepted observation count for the average atmosphere gridded parameter computation. The cell numerator running counts or running sums are discriminated by logic application of specified flags, attributes, and quality flags. Once all ATL09 dataset input has been assimilated, counted and/or summed within the numerator and denominator grid cells as appropriate, the rational division of numerator cells by denominator cells for the grid parameter array is performed to generate each atmosphere gridded parameter. The cells of the denominator grid consist of the count of 25 Hz observations, with the filtered count exceptions being average apparent surface reflectance and blowing snow frequency. For the record, blowing snow frequency deviates from this description in that the low-rate 1 Hz profile data is used. Also it is noted that the set of parameters collected and reported as observation counts in Section 3.9 are actually the denominator total observation count or the number of observations used in the summation grid cell contents. NOTE: with this ATBD version, high-rate blowing snow height and confidence profile data is now assimilated for accumulation and computation of the high-rate blowing snow frequency.

The following pseudocode content presents how the night only data selection logic would be generically applied to each global and polar gridded parameter. Section 2.0 addresses the (i,j) array indexing and indices. NOTE: the input high-rate parameter *solar_elevation ()* does not contain INVALID values in the profile observations.

the pseudocode below represents the generic (typical) logic for night only data filtering of ATL09 profile parameter data including selected observations for counting or summation in the numerator grid, and the total available observation count collected in the denominator grid, for all 25 Hz (high-rate) profile observations ():

<pre> for every 25 Hz profile observation () for <i>data_type_flag</i> = 1 for <i>solar_elevation</i> () => 0.0 next 25 Hz profile observation () else for filtering criteria met for profile observation counting add 1 to parameter counter grid (i,j) [numerator] for profile observation running sum add parameter to summation grid (i,j) [numerator] add 1 to total observation grid (i,j) [denominator] next 25 Hz profile observation () </pre>	<pre> process night only data indicates daylight observation skip to next profile observation this is night data, process this profile observation for observation counting increment counter grid for observation running sum add value to summation grid increment total observation grid cycle through all observations </pre>
---	---

the pseudocode below represents the generic (typical) logic for filtering of ATL09 profile parameter data including selected observations for summation in the numerator grid, and the filtered available observation count collected in the denominator grid, for all 1 Hz (low-rate) profile observations () in the case of low-rate blowing snow frequency:

for *data_type_flag* = 1 process night only data
interpolate 25 Hz profile *solar_elevation* () to 1 Hz profile *lo_rate_solar_elevation* () using 1 Hz *lo_rate_atm_time* ()

<pre> for every 1 Hz profile observation () for <i>data_type_flag</i> = 1 for <i>lo_rate_solar_elevation</i> () => 0.0 next 1 Hz profile observation () else for detection filtering criteria met add 1 to detection grid (i,j) [numerator] for observation filtering criteria met add 1 to observation grid (i,j) [denominator] next 1 Hz profile observation () </pre>	<pre> process night only data indicates daylight observation skip to next profile observation this is night data, process; test detection grid criteria increment detection grid test observation grid criteria increment sel. observation grid cycle through all observations </pre>
---	---

2.0 Global and Polar Grids

For the atmosphere gridded products presented here, simple grids are used at various resolutions. For the monthly (ATL17) product, the global grids and the polar grids, the longitude by latitude sizes are included in Table 2. Similarly, the weekly product (ATL16) global grids and the polar grids longitude and latitude sizes are found in Table 2. Some atmospheric fields are produced on a global grid while others are produced on polar grids that cover only the area poleward of 60N or 60S. Two atmospheric parameters, apparent surface reflectivity and ground detection frequency, are produced on both global and polar projection arrays. Array dimensions for the monthly global grids (i,j) and the weekly global grids (i,j) are also included in Table 2. Similarly, monthly polar grids (i,j) dimensions and weekly polar grids (i,j) dimensions are supplied in Table 2. The latitudes and longitudes of the various grids will be included on both products as single-dimensioned linear arrays (described in Table 5). NOTE: in the (i,j) grid cell indices, i is the longitude index and j is the latitude index.

The underlying assumptions for global atmosphere gridded algorithms are that longitude goes from -180 to 180 and latitude goes from -90 to 90 degrees; and that the (i,j) indices start at (0,0) for (longitude=-180, latitude=-90). For the global gridded atmosphere parameter array the origin (0,0) occurs at the lower left corner. A graphical illustration of the indexing scheme for an example global gridded array showing the cell layout including the origin and reference is provided in Attachment A-3.

The monthly and weekly **global grid indices** are computed from *longitude* and *latitude* coordinates as follows:

$i = \text{int}(\text{longitude}+180.0),$ $j = \text{int}(\text{latitude}+90.0)$	for the 1x1 degree grid	global monthly grid, ATL17 product
$i = \text{int}(\text{longitude}/3+60.0),$ $j = \text{int}(\text{latitude}/3+30.0)$	for the 3x3 degree grid	global weekly grid, ATL16 product

Polar monthly grids and the polar weekly grids will be dimensioned according to Table 2. The longitude span is expressed in the assumptions above. North polar latitude goes from 90 down to 60 degrees. The North polar (i,j) indices start at (0,0) for (longitude=-180, latitude=90). For the North polar gridded atmosphere parameter array the origin (0,0) occurs at the upper left corner. A graphical illustration of the indexing scheme for an example North polar gridded array showing the cell layout including the origin and reference is provided in Attachment A-4.

The **North polar grid indices** are computed as:

$i = \text{int}(\text{longitude}/1.5+120.0),$ $j = \text{int}(180.0-\text{latitude}*2)$	for the 1.5x0.5-degree grid, where <i>latitude</i> is ≥ 60.0	North polar monthly grid, ATL17 product
$i = \text{int}(\text{longitude}/3.0+60.0),$ $j = \text{int}(90.0-\text{latitude})$	for the 3x1 degree grid, where <i>latitude</i> is ≥ 60.0	North polar weekly grid, ATL16 product

Again, the longitude span is expressed in the assumptions above. South polar latitude goes from -90 up to -60 degrees. The South polar (i,j) indices start at (0,0) for (longitude=-180, latitude=-90). For the South polar gridded atmosphere parameter array the origin (0,0) occurs at the lower left corner. A graphical illustration of the indexing scheme for an example South polar gridded array showing the cell layout including the origin and reference is provided in Attachment A-5.

The **South polar grid indices** are computed as:

$i = \text{int}(\text{longitude}/1.5+120.0),$ $j = \text{int}(180.0+\text{latitude}*2)$	for the 1.5x0.5-degree grid, where <i>latitude</i> is ≤ -60.0	South polar monthly grid, ATL17 product
$i = \text{int}(\text{longitude}/3.0+60.0),$ $j = \text{int}(90.0+\text{latitude})$	for the 3x1 degree grid, where <i>latitude</i> is ≤ -60.0	South polar weekly grid, ATL16 product

3.0 Product Definitions

3.1 Global Fractions

In the beginning... there was only Global Cloud Fraction. Close inspection of the derivation of the initial global cloud fraction algorithm revealed the parameter was actually the global cloud and aerosol fraction. Hence the reclassification of the atmosphere gridded parameter as Global Cloud and Aerosol Fraction (as clarified in Version 1.2, February 27, 2019). Then with delivery of the August 21, 2019 Version 2.0 ATBD, the algorithms were differentiated into Global Cloud Fraction (Section 3.1) and Global Aerosol Fraction (Section 3.1.1). With the delivery of the Version 3.2 [Interim] ATBD dated January 12, 2021, the new gridded parameter Global Clear Fraction has been introduced as a new Section 3.1.2. Finally, the January 12, 2021, Version 3.2 [Interim] ATBD presented modifications to “augment” the existing Global Cloud Fraction by supplementing the profile cloud layer count from the DDA to also include the profile cloud count from as defined by the ATL09 parameter [asr_cloud_probability](#). Subsequently, the decision is made to retain the original global cloud fraction algorithm along with the new combined DDA plus ASR global cloud fraction algorithm. Thus, the section is now reorganized as the presenting overview under the title Global Fractions hosting the four atmosphere gridded fraction parameters projected on the global grid for both the weekly ATL16 product and the monthly ATL17 product.

These sub-sections are now presented and discriminated as:

- Global Cloud Fraction (from DDA),
- Combined Global Cloud Fraction (from DDA plus ASR),
- Global Aerosol Fraction, and
- Global Clear Fraction.

3.1.1 Global Cloud Fraction

Atmosphere Gridded Parameter Summary		ATL16		ATL17		
Long Name:	Global Cloud Fraction	Lon	Lat	Lon	Lat	
Product variable:	global_cloud_frac (,)	3.0	3.0	1.0	1.0	deg
Product group:	Group: /	120	60	360	180	dim
Image label:	Global Cloud Fraction					
Image parameter:	global_cloud_frac_img	Group: /				
Observation grid:	global_cloud_aerosol_obs_grid (,)	Group: /				
Statistical variables:	global_cloud_frac_min global_cloud_frac_max global_cloud_frac_mean global_cloud_frac_sdev	Group: /quality_assessment /atmosphere				
ATL09 variable(s):	cloud_flag_atm () layer_attr (,)	ATL09 Group: /profile_x /high_rate				
Control variable(s)	weekly_obs_minimum → obs_minimum (ATL16) monthly_obs_minimum → obs_minimum (ATL17)	Group: /ancillary_data /atmosphere				
PGE module:	glob_cloud_frac_mod.f90					

This atmospheric parameter (“[global_cloud_frac](#)”, i.e., from Table 5, typical) is displayed on a global grid. Define a “dda cloud counter grid” [i.e., the numerator grid] and a “total observation grid” [i.e., the denominator grid]. The ATL09 product contains the parameter “[cloud_flag_atm](#)” which is the number of layers detected for a given 25 Hz profile (note: up to possibly 10 layers). When this parameter is > 0 AND the parameter [layer_attr](#) = 1 for any layer (i.e., 1=cloud layer attribute), the dda cloud counter grid box associated with the current location (i,j) indices (computed as in Section 2.0 above) is incremented by one (1) for that grid box. The total observation grid box count is incremented by one (1) for every 25 Hz profile regardless of the value of the product parameter [cloud_flag_atm \(\)](#) or [layer_attr \(,\)](#). NOTE: the input parameters [cloud_flag_atm \(\)](#) and [layer_attr \(,n\)](#) do not contain INVALID values in the profile observations. Therefore, no INVALID input profile observation testing is required.

NOTE that the “dda cloud counter grid” is incremented only once regardless of the number of cloud layers detected after the first determined cloud layer. The origin of the global cloud fraction is based on the layers derived from “Detection of Atmosphere Layers and Surface Using a Density Dimension Algorithm (DDA)” from the Atmosphere ATBD Part II, Version 11.0, dated February 4, 2020, and the classification of layer type (as cloud or aerosol) as defined in “ICESat-2 Algorithm Theoretical Basis Document for the Atmosphere, Part I: Level 2 and 3 Data Products”, Version 3.4, dated January 15, 2021.

the pseudocode below represents the conditional logic for incrementing the “ <i>dda cloud counter grid</i> ”, i.e., the numerator grid, for all 25 Hz (high-rate) profile observations ():	
for 25 Hz <i>cloud_flag_atm</i> () > 0 and <i>layer_attr</i> (,n) = 1 <i>dda cloud counter grid</i> (i,j) = <i>dda cloud counter grid</i> (i,j) + 1 next profile observation	a dda cloud layer is detected only for the first <i>layer_attr</i> (,n) = 1
the pseudocode below represents the logic for incrementing the “ <i>total observation grid</i> ”, i.e., the denominator grid, for all 25 Hz (high-rate) profile observations ():	
for every 25 Hz profile observation <i>total observation grid</i> (i,j) = <i>total observation grid</i> (i,j) + 1 next profile observation	

After reading the input ATL09 files for the period in question, the dda cloud counter grid [the numerator grid] is divided by the total observation grid [the denominator grid] to obtain a global grid of cloud fraction (from DDA). For cases where the number of total observations for a grid box is less than *week_obs_minimum* (ATL16) or *month_obs_minimum* (ATL17), set the global cloud fraction to INVALID.

the pseudocode below represents the conditional logic for calculating the “ <i>global cloud fraction grid</i> ” by division of the “ <i>dda cloud counter grid</i> ”, i.e., the numerator grid, by the “ <i>total observation grid</i> ”, i.e., the denominator grid, for either the weekly or the monthly atmosphere gridded data product:
for total observation grid (i,j) => * <i>_obs_minimum</i> <i>dda cloud counter grid</i> (i,j) global cloud fraction grid (i,j) = $\frac{\text{dda cloud counter grid (i,j)}}{\text{total observation grid (i,j)}}$ else global cloud fraction grid (i,j) = INVALID next grid cell
NOTE: * <i>_obs_minimum</i> represents either <i>weekly_obs_minimum</i> or <i>monthly_obs_minimum</i> based on product

NOTE that the title of the image made from these data was briefly “Global Cloud and Aerosol Layer Fraction” (as implemented with ATBD Version 1.2) and was required to be changed to “Global Cloud Fraction” after the changes with ATBD Version 2.0 were made, which implemented cloud/aerosol discrimination via the *layer_attr* parameter described above. The image label for the global cloud fraction will be “Global Cloud Fraction”.

3.1.2 Combined Global Cloud Fraction

Atmosphere Gridded Parameter Summary		ATL16		ATL17		
Long Name:	Combined Global Cloud Fraction	Lon	Lat	Lon	Lat	
Product variable:	<i>combined_global_cloud_frac</i> (,)	3.0	3.0	1.0	1.0	deg
Product group:	Group: /	120	60	360	180	dim
Image label:	Combined Global Cloud Fraction					
Image parameter:	<i>combined_global_cloud_frac_img</i>	Group: /				
Observation grid:	<i>global_cloud_aerosol_obs_grid</i> (,)	Group: /				
Statistical variables:	<i>combined_global_cloud_frac_min</i> <i>combined_global_cloud_frac_max</i> <i>combined_global_cloud_frac_mean</i> <i>combined_global_cloud_frac_sdev</i>	Group: /quality_assessment /atmosphere				
ATL09 variable(s):	<i>cloud_flag_atm</i> () <i>layer_attr</i> (,) <i>asr_cloud_probability</i> ()	ATL09 Group: /profile_x /high_rate				
Control variable(s)	<i>asr_cloud_threshold</i> <i>weekly_obs_minimum</i> → <i>obs_minimum</i> (ATL16) <i>monthly_obs_minimum</i> → <i>obs_minimum</i> (ATL17)	Group: /ancillary_data /atmosphere				
PGE module:	comb_glob_cloud_frac_mod.f90					

The existing global cloud fraction, based on the cloud layers determined by the backscatter profile layer finding DDA algorithm [identified as the gridded parameter Global Cloud Fraction (from DDA)] is now supplemented with the combined global cloud fraction identified as the new atmosphere gridded parameter Combined Global Cloud Fraction. The combined global cloud fraction includes the DDA detected clouds and increases the detected cloud count with addition of occurrence of clouds from the apparent surface reflectivity (ASR) magnitude algorithm.

This added atmospheric parameter (“*combined_global_cloud_frac*”) is displayed on a global grid. Define a “dda+asr cloud counter grid” [i.e., the numerator grid] and a “total observation grid” [i.e., the denominator grid]. The ATL09 product contains the parameter “*cloud_flag_atm*” which is the number of layers detected for a given 25 Hz profile (note: up to possibly 10 layers). When this parameter is > 0 AND the parameter *layer_attr* = 1 for any layer (i.e., 1=cloud layer attribute), a cloud layer from DDA has been detected, and the dda+asr cloud counter grid box associated with the current location (i,j) indices (computed as in Section 2.0 above) is incremented by one (1) for that grid box. In addition, if no DDA cloud layer is detected, then do the following: check the ATL09 parameter *asr_cloud_probability*, and if it is greater than or equal to the control parameter *asr_cloud_threshold* (nominal value of 80), an ASR cloud layer has been detected, then increment the dda+asr cloud counter grid box associated with the current location (i,j) indices by one (1) for that grid box. The total observation grid box count is incremented by one (1) for every 25 Hz profile regardless of the value of the product parameter *cloud_flag_atm* () or *layer_attr* (,) or *asr_cloud_probability* (). NOTE: the input parameters

cloud_flag_atm () and *layer_attr (,n)* and *asr_cloud_probability ()* do not contain INVALID values in the profile observations. Therefore, no INVALID input profile observation testing is required.

NOTE that the “dda+asr cloud counter grid” is incremented only once regardless of the number of cloud layers detected after the first determined cloud layer from DDA cloud layer determination. If a DDA cloud layer is detected, there will no further checking for an ASR cloud probability cloud layer for the profile observation. This means there is no redundant, coincident counting of cloud layer occurrences.

the pseudocode below represents the conditional logic for incrementing the “ <i>dda+asr cloud counter grid</i> ”, i.e., the numerator grid, for all 25 Hz (high-rate) profile observations ():	
<pre> for every 25 Hz profile observation if [<i>cloud_flag_atm ()</i> > 0 and <i>layer_attr (,n)</i> = 1 OR <i>asr_cloud_probability ()</i> => <i>asr_cloud_threshold</i>] dda+asr cloud counter grid (i,j) = dda+asr cloud counter grid (i,j) + 1 end if next profile observation </pre>	<pre> test for a DDA cloud layer OR an ASR cloud layer: a DDA cloud layer [first <i>layer_attr (,n)</i> = 1] OR an ASR cloud layer is detected, increment dda+asr cloud counter </pre>
the pseudocode below represents the logic for incrementing the “ <i>total observation grid</i> ”, i.e., the denominator grid, for all 25 Hz (high-rate) profile observations ():	
<pre> for every 25 Hz profile observation total observation grid (i,j) = total observation grid (i,j) + 1 next profile observation </pre>	

After reading the input ATL09 files for the period in question, the dda+asr cloud counter grid [the numerator grid] is divided by the total observation grid [the denominator grid] to obtain a combined global grid of cloud fraction (from DDA and ASR). For cases where the number of total observations for a grid box is less than *week_obs_minimum* (ATL16) or *month_obs_minimum* (ATL17), set the combined global cloud fraction to INVALID.

the pseudocode below represents the conditional logic for calculating the “ <i>combined global cloud fraction grid</i> ” by division of the “ <i>dda+asr cloud counter grid</i> ”, i.e., the numerator grid, by the “ <i>total observation grid</i> ”, i.e., the denominator grid, for either the weekly or the monthly atmosphere gridded data product:
<pre> for total observation grid (i,j) => <i>*_obs_minimum</i> combined global cloud fraction grid (i,j) = dda+asr cloud counter grid (i,j) ----- total observation grid (i,j) else combined global cloud fraction grid (i,j) = INVALID next grid cell </pre>
NOTE: <i>*_obs_minimum</i> represents either <i>weekly_obs_minimum</i> or <i>monthly_obs_minimum</i> based on product

The title of the image made from these data is “Combined Global Cloud Fraction”.

3.1.3 Global Aerosol Fraction

Atmosphere Gridded Parameter Summary		ATL16		ATL17		
Long Name:	Global Aerosol Fraction	Lon	Lat	Lon	Lat	
Product variable:	global_aerosol_frac (,)	3.0	3.0	1.0	1.0	deg
Product group:	Group: /	120	60	360	180	dim
Image label:	Global Aerosol Fraction					
Image parameter:	global_aerosol_frac_img	Group: /				
Observation grid:	global_cloud_aerosol_obs_grid (,)	Group: /				
Statistical variables:	global_aerosol_frac_min global_aerosol_frac_max global_aerosol_frac_mean global_aerosol_frac_sdev	Group: /quality_assessment /atmosphere				
ATL09 variable(s):	cloud_flag_atm () layer_attr (,)	ATL09 Group: /profile_x /high_rate				
Control variable(s)	weekly_obs_minimum → obs_minimum (ATL16) monthly_obs_minimum → obs_minimum (ATL17)	Group: /ancillary_data /atmosphere				
PGE module:	glob_aerosol_frac_mod.f90					

This atmospheric parameter (“[global_aerosol_frac](#)”) is displayed on a global grid. Define an “aerosol counter grid” [i.e., the numerator grid] and a “total observation grid” [i.e., the denominator grid]. The ATL09 product contains the parameter “[cloud_flag_atm](#)” which is the number of layers detected for a given 25 Hz profile (up to 10 layers). When this parameter is > 0 AND the parameter [layer_attr](#) = 2 for any layer (i.e., 2=aerosol layer attribute), the aerosol counter grid box associated with the current location (i,j) indices (computed as in Section 2.0 above) is incremented by one (1) for that grid box. Note that when [cloud_flag_atm](#) > 1, the [layer_attr](#) flag must be checked for each of the layers. If any one of them is equal to 2, then the aerosol counter is incremented. The total observation count grid box is incremented by one (1) for every 25 Hz profile regardless of the value of the product parameter [cloud_flag_atm \(\)](#) or [layer_attr \(,\)](#). NOTE: the input parameters [cloud_flag_atm \(\)](#) and [layer_attr \(,n\)](#) do not contain INVALID values in the profile observations. Therefore, no INVALID input profile observation testing is required.

NOTE that the “aerosol counter grid” is incremented only once regardless of the number of aerosol layers detected after the first determined aerosol layer.

the pseudocode below represents the conditional logic for incrementing the “ <i>aerosol counter grid</i> ”, i.e., the numerator grid, for all 25 Hz (high-rate) profile observations ():	
for 25 Hz <i>cloud_flag_atm</i> () > 0 and <i>layer_attr</i> (,n) = 2 aerosol counter grid (i,j) = aerosol counter grid (i,j) + 1 next profile observation	an aerosol layer is detected only for the first <i>layer_attr</i> (,n) = 1
the pseudocode below represents the logic for incrementing the “ <i>total observation grid</i> ”, i.e., the denominator grid, for all 25 Hz (high-rate) profile observations ():	
for every 25 Hz profile observation total observation grid (i,j) = total observation grid (i,j) + 1 next profile observation	

After reading the input ATL09 files for the period in question, the aerosol counter grid is divided by the total observation grid to obtain a global grid of aerosol fraction. For cases where the number of total observations for a grid box is less than *week_obs_minimum* (ATL16) or *month_obs_minimum* (ATL17), set the aerosol fraction to INVALID.

the pseudocode below represents the conditional logic for calculating the “ <i>global aerosol fraction grid</i> ” by division of the “ <i>aerosol counter grid</i> ”, i.e., the numerator grid, by the “ <i>total observation grid</i> ”, i.e., the denominator grid, for either the weekly or the monthly atmosphere gridded data product:
for total observation grid (i,j) => <i>*_obs_minimum</i> aerosol counter grid (i,j) global aerosol fraction grid (i,j) = ----- total observation grid (i,j) else global aerosol fraction grid (i,j) = INVALID next grid cell
NOTE: <i>*_obs_minimum</i> represents either <i>weekly_obs_minimum</i> or <i>monthly_obs_minimum</i> based on product

The title of the image made from these data is “Global Aerosol Fraction”.

3.1.4 Global Clear Fraction

Atmosphere Gridded Parameter Summary		ATL16		ATL17		
Long Name:	Global Clear Fraction	Lon	Lat	Lon	Lat	
Product variable:	global_clear_frac (,)	3.0	3.0	1.0	1.0	deg
Product group:	Group: /	120	60	360	180	dim
Image label:	Global Clear Fraction					
Image parameter:	global_clear_frac_img	Group: /				
Observation grid:	global_cloud_aerosol_obs_grid (,)	Group: /				
Statistical variables:	global_clear_frac_min global_clear_frac_max global_clear_frac_mean global_clear_frac_sdev	Group: /quality_assessment /atmosphere				
ATL09 variable(s):	cloud_flag_atm () layer_attr (,)	ATL09 Group: /profile_x /high_rate				
Control variable(s)	weekly_obs_minimum → obs_minimum (ATL16) monthly_obs_minimum → obs_minimum (ATL17)	Group: /ancillary_data /atmosphere				
PGE module:	glob_clear_frac_mod.f90					

This atmospheric parameter (“[global_clear_frac](#)”) is displayed on a global grid. Define a “clear counter grid” [i.e., the numerator grid] and a “total observation grid” [i.e., the denominator grid]. The ATL09 product contains the parameter “[cloud_flag_atm](#)” which is the number of layers detected for a given 25 Hz profile (up to 10 layers). When this parameter is = 0 the clear counter grid box associated with the current location (l,j) indices is incremented by one (1) for that grid box. In addition, if the parameter [cloud_flag_atm](#) is equal to n, where n is > 0, then examine the parameter [layer_attr](#) for each of the n layers. If [layer_attr](#) = 2 (aerosol layer) for all of the n layers, then the clear counter grid box associated with the current location (l,j) indices is incremented by one (1) for that grid box. The total observation count grid box is incremented by one (1) for every 25 Hz profile regardless of the value of the product parameter [cloud_flag_atm \(\)](#). NOTE: the input parameters [cloud_flag_atm \(\)](#) and [layer_attr](#) do not contain INVALID values in the profile observations. Therefore, no INVALID input profile observation testing is required.

the pseudocode below represents the conditional logic for incrementing the “clear counter grid”, i.e., the numerator grid, for all 25 Hz (high-rate) profile observations ():	
<pre> for every 25 Hz profile observation if [cloud_flag_atm () = 0 OR cloud_flag_atm () > 0 and all n layer_attr (,n) = 2] clear counter grid (i,j) = clear counter grid (i,j) + 1 end if next profile observation </pre>	no DDA cloud layers detected OR only aerosol layers detected increment clear counter grid
the pseudocode below represents the logic for incrementing the “total observation grid”, i.e., the denominator grid, for all 25 Hz (high-rate) profile observations ():	
<pre> for every 25 Hz profile observation total observation grid (i,j) = total observation grid (i,j) + 1 next profile observation </pre>	

After reading the input ATL09 files for the period in question, the clear counter grid [the numerator grid] is divided by the total observation grid [the denominator grid] to obtain a global grid of clear fraction. For cases where the number of total observations for a grid box is less than *week_obs_minimum* (ATL16) or *month_obs_minimum* (ATL17), set the clear fraction to INVALID.

the pseudocode below represents the conditional logic for calculating the “global clear fraction grid” by division of the “clear counter grid”, i.e., the numerator grid, by the “total observation grid”, i.e., the denominator grid, for either the weekly or the monthly atmosphere gridded data product:
<pre> for total observation grid (i,j) => *_obs_minimum clear counter grid (i,j) global clear fraction grid (i,j)= ----- total observation grid (i,j) else global clear fraction grid (i,j)= INVALID next grid cell </pre>
NOTE: *_obs_minimum represents either <i>weekly_obs_minimum</i> or <i>monthly_obs_minimum</i> based on product

The title of the image made from these data is “Global Clear Fraction”.

3.2 Total Column Optical Depth

The Total Column Optical Depth section is now reorganized to present both the existing global gridded total column optical depth over water parameter and the new expanded global gridded total column optical depth over water and over ocean parameter. The expanded parameter incorporates an algorithm for replacing over-water atmospheric column optical depth (OD) from apparent surface reflectance (ASR) INVALID profile data with a calculated estimated optical depth value. The expanded *surf_type* (ocean,) over-ocean INVALID replacement values offer the opportunity to use the invalid values of *column_od_asr* (where ground return was not detected due to opaque clouds) to estimate the optical depth knowing that since the surface return was totally attenuated, the optical depth of the column must be greater than about 3 to 4. Currently, the optical depth used to replace the INVALID values is computed by randomly selecting a value that ranges from 3 to the value of a new control parameter: *gen_cloud_od_max* (nominal value = 35 [default]). In the future this approach will be improved by using cloud optical depth histograms based on MODIS or other satellite-based estimates.

Consequently, the retained global gridded total column optical depth over water parameter and the new expanded global gridded total column optical depth over water parameter are presented in the following sub-sections:

- Global (Over Water) Total Column Optical Depth and
- Expanded Global (Over Water) Total Column Optical Depth.

3.2.1 Global (Over Water) Total Column Optical Depth

Atmosphere Gridded Parameter Summary		ATL16		ATL17		
Long Name:	Global (Over Water) Total Column Optical Depth	Lon	Lat	Lon	Lat	
Product variable:	global_column_od (,)	3.0	3.0	1.0	1.0	deg
Product group:	Group: /	120	60	360	180	dim
Image label:	Global (Over Water) Total Column Optical Depth (0-1.5)					
Image parameter:	global_column_od_img	Group: /				
Observation grid:	tcod_obs_grid (,)	Group: /				
Statistical variables:	global_column_od_min global_column_od_max global_column_od_mean global_column_od_sdev	Group: /quality_assessment /atmosphere				
ATL09 variable(s):	column_od_asr () column_od_asr_qf ()	ATL09 Group: /profile_x /high_rate				
Control variable(s)	weekly_obs_minimum → obs_minimum (ATL16) monthly_obs_minimum → obs_minimum (ATL17)	Group: /ancillary_data /atmosphere				
PGE module:	glob_tot_col_od_mod.f90					

The atmospheric parameter Total Column Optical Depth (Over Water) is displayed on a global grid. On the ATL09 product is a parameter called [column_od_asr](#) which is the total column optical depth estimated from the apparent surface reflectance. This parameter is computed over the entire globe, but for this product we only want to grid the data over water. Global grids are established as in Section 3.1 above. If the total column optical depth is not INVALID (i.e., it will be INVALID when there is no ground return detected), and if the return is over a water surface (i.e., if the ATL09 product parameter [column_od_asr_qf](#) is = 4, indicates over water), AND if [column_od_asr](#) is NOT EQ 0.0, then it (i.e., [column_od_asr](#)) is added to the total column optical depth grid box [i.e., the numerator grid] corresponding to the current location (i,j) indices (value computed as in Section 2.0 above), and the corresponding over water total observation counter grid box [i.e., the denominator grid] is incremented by one (1). NOTE: the parameters [column_od_asr \(\)](#) will contain INVALID values and [column_od_asr_qf \(\)](#) will contain INVALID values in the profile observations. Therefore, INVALID input profile observation exception is required.

the pseudocode below represents the logic for selected summation of the “total column optical depth grid”, i.e., the numerator grid, and for selected increment of the “total water observation grid”, i.e., the denominator grid, based on the filtered and accepted 25 Hz (high-rate) profile observations ():
for 25 Hz profile column_od_asr () ≠ INVALID and column_od_asr () > 0 and column_od_asr_qf () = 4 total column optical depth grid (i,j) = total column optical depth grid (i,j) + column_od_asr () total water observation grid (i,j) = total water observation grid (i,j) + 1 next profile observation

After all of the ATL09 granules have been read in, the total column optical depth grid is divided by the total water observation counter grid (where the total water observation counter grid is > 0) to establish the global average total column optical depth over water (“*global_column_od*”) for the period in question. For cases where the number of total water observations for a grid box is less than *week_obs_minimum* (ATL16) or *month_obs_minimum* (ATL17), set the global average total column optical depth to INVALID.

<p>the pseudocode below represents the conditional logic for calculating the “<i>global average total column optical depth grid</i>” by division of the “<i>total column optical depth grid</i>”, i.e., the numerator grid, by the “<i>total water observation grid</i>”, i.e., the denominator grid, for either the weekly or the monthly atmosphere gridded data product:</p>
<pre> for total water observation grid (i,j) => *_obs_minimum global average total column optical depth over water grid (i,j) = $\frac{\text{total column optical depth grid (i,j)}}{\text{total water observation grid (i,j)}}$ else global average total column optical depth over water grid (i,j) = INVALID next grid cell </pre>
<p>NOTE: *_obs_minimum represents either <i>weekly_obs_minimum</i> or <i>monthly_obs_minimum</i> based on product</p>

As indicated in Section 1.0 and Table 2 above, the low-resolution global grid size and dimension is used for the weekly product and the high-resolution global grid size and dimension is used for the monthly product.

NOTE that the 0 to 1.5 range constraint is applied to the image and not to the parameter gridded array values. Note also that the title of the image written to the product for this parameter is to be “Global (Over Water) Total Column Optical Depth (0-1.5)”.

3.2.2 Expanded Global (Over Water) Total Column Optical Depth

Atmosphere Gridded Parameter Summary		ATL16		ATL17		
Long Name:	Expanded Global (Over Water) Total Column Optical Depth	Lon	Lat	Lon	Lat	
Product variable:	expanded_global_column_od (,)	3.0	3.0	1.0	1.0	deg
Product group:	Group: /	120	60	360	180	dim
Image label:	Expanded Global (Over Water) Total Column Optical Depth (0-25)					
Image parameter:	expanded_global_column_od_img	Group: /				
Observation grid:	exp_tcod_obs_grid (,)	Group: /				
Statistical variables:	expanded_global_column_od_min expanded_global_column_od_max expanded_global_column_od_mean expanded_global_column_od_sdev	Group: /quality_assessment /atmosphere				
ATL09 variable(s):	column_od_asr () column_od_asr_qf () surf_type (,)	ATL09 Group: /profile_x /high_rate				
Control variable(s)	gen_cloud_od_max weekly_obs_minimum → obs_minimum (ATL16) monthly_obs_minimum → obs_minimum (ATL17)	Group: /ancillary_data /atmosphere				
PGE module:	exp_glob_tot_col_od_mod.f90					

The *new* atmospheric parameter Expanded Total Column Optical Depth (Over Water) is displayed on a global grid. The basis of the parameter remains the same algorithm as the existing-TCOD over water with additions to replace INVALID over water profile data. On the ATL09 product is a parameter called [column_od_asr](#) which is the total column optical depth estimated from the apparent surface reflectance. This parameter is computed over the entire globe, but for this product we only want to grid the data over water. Global grids are established as in Section 3.1 above. If the total column optical depth is not INVALID (i.e., it will be INVALID when there is no ground return detected), and if the return is over a water surface (i.e., if the ATL09 product parameter [column_od_asr_qf](#) is = 4, indicates over water), AND if [column_od_asr](#) is NOT EQ 0.0, then it (i.e., [column_od_asr](#)) is added to the expanded total column optical depth grid box [i.e., the numerator grid] corresponding to the current location (i,j) indices (value computed as in Section 2.0 above), and the corresponding expanded over water total observation counter grid box [i.e., the denominator grid] is incremented by one (1). In addition, do the following: If [column_od_asr](#) is INVALID (i.e. it will be INVALID when there was no ground return detected), AND if the return is over a water surface (i.e., if the ATL09 product parameter surface type [surf_type](#) (ocean,)= 1, where ocean is the array ocean index, a value of 1 indicates over water), then we randomly chose an optical depth value ranging from 3 to the value of a new control parameter: [gen_cloud_od_max](#) (nominal value = 35 [default]). This is done by generating a normally distributed random number from 0 to 1 and multiplying it by ([gen_cloud_od_max](#) - 3) and adding 3. That result is

then added to the expanded total column optical depth grid box [i.e., the numerator grid] corresponding to the current location (i,j) indices (value computed as in Section 2.0 above), and the corresponding expanded over water total observation counter grid box [i.e., the denominator grid] is incremented by one (1). NOTE: the parameters `column_od_asr ()` will contain INVALID values and `column_od_asr_qf ()` will contain INVALID values in the profile observations. The parameter `surf_type (,)` does not contain INVALID values. Therefore, INVALID input profile observation exception is required for the ASR column optical depth and quality flag. Here the INVALID ASR column optical depth profile observation handling is the invocation of the code to replace INVALID over water column optical depth observations with an estimated replacement value. NOTE also that the scaling of the resulting plot will need to be much larger than the global average total column optical depth over water. A guess is that the scaling maximum would be roughly `gen_cloud_od_max / 4`. The value of `gen_cloud_od_max` should be written on the plot.

The existing contribution to the numerator grid summation for the expanded total column optical depth over water is modeled in the following pseudocode.

the pseudocode below represents the logic for selected summation of the existing contribution to the “expanded total column optical depth grid”, i.e., the numerator grid, and for selected increment of the “expanded total water observation grid”, i.e., the denominator grid, based on the filtered and accepted 25 Hz (high-rate) profile observations ():

```
for 25 Hz profile column_od_asr () ≠ INVALID and column_od_asr () > 0 and column_od_asr_qf () = 4
  expanded total column optical depth grid (i,j) =
    expanded total column optical depth grid (i,j) + column_od_asr ()
  expanded total water observation grid (i,j) = expanded total water observation grid (i,j) + 1
next profile observation
```

The expanded algorithm contribution to the numerator grid summation for the expanded total column optical depth over water is modeled in the following pseudocode. This also includes initialization to support the estimated replacement value computation for INVALID `column_od_asr ()`.

the pseudocode below represents the logic for initiation of parameters to support the estimates of replacement values for INVALID 25 Hz (high-rate) profile over-ocean column optical depth from ASR observations ():

```
randg_seed (randgseed); perform random seed for Gaussian (normal) random number generator
od_max_multiplier = gen_cloud_od_max - 3; compute constant multiplier
```

the pseudocode below represents the logic for estimates of replacement observations for INVALID `column_od_asr ()` over ocean profile values to “expand” the summation of the “expanded total column optical depth grid”, i.e., the numerator grid, and for selected increment of the “expanded total water observation grid”, i.e., the denominator grid, based on both the filtered and accepted 25 Hz (high-rate) profile observations () and the estimated replacement values for the INVALID over-ocean column optical density from ASR observations:

```
for 25 Hz profile column_od_asr () = INVALID and surf_type (ocean,) = 1; INVALID col od over ocean
  est_column_od_asr = randg() [0,1] * od_max_multiplier + 3; calculate estimated col od asr
  expanded total column optical depth grid (i,j) =
    expanded total column optical depth grid (i,j) + est_column_od_asr
  expanded total water observation grid (i,j) = expanded total water observation grid (i,j) + 1
next profile observation
```

After all of the ATL09 granules have been read in, the expanded total column optical depth grid is divided by the expanded total water observation counter grid (where the water observation counter grid is > 0) to establish the expanded global average total column optical depth over water (“*expanded_global_column_od*”) for the period in question. For cases where the number of expanded total over-water observations and estimated over-ocean observations for a grid box is less than *week_obs_minimum* (ATL16) or *month_obs_minimum* (ATL17), set the expanded average total column optical depth to INVALID.

<p>the pseudocode below represents the conditional logic for calculating the “<i>expanded global average total column optical depth grid</i>” by division of the “<i>expanded total column optical depth grid</i>”, i.e., the numerator grid, by the “<i>expanded total water observation grid</i>”, i.e., the denominator grid, for either the weekly or the monthly atmosphere gridded data product:</p>
<pre> for expanded total water observation grid (i,j) => *_obs_minimum expanded global average total column optical depth over water grid (i,j) = expanded total column optical depth grid (i,j) ----- expanded total water observation grid (i,j) else expanded global average total column optical depth over water grid (i,j) = INVALID next grid cell </pre>
<p>NOTE: *_obs_minimum represents either <i>weekly_obs_minimum</i> or <i>monthly_obs_minimum</i> based on product</p>

As indicated in Section 1.0 and Table 2 above, the low-resolution global grid size and dimension is used for the weekly product and the high-resolution global grid size and dimension is used for the monthly product.

NOTE that the 0 to 25 expanded range constraint based on the *gen_cloud_od_max* control parameter is applied to the image and not to the expanded parameter gridded array values. Note also that the title of the image written to the product for this parameter is to be “Expanded Global (Over Water) Total Column Optical Depth (0-25)”. [NOTE also that the range maximum upper constraint is subject to change.]

3.3 Polar Cloud Fraction

3.3.1 High, Middle, Low and Total Cloud Fraction

Atmosphere Gridded Parameter Summary		ATL16		ATL17		
Long Name:	North Polar High Cloud Fraction (> 8km)	Lon	Lat	Lon	Lat	
Product variable:	<i>npolar_highcloud_frac (,)</i>	3.0	1.0	1.5	0.5	deg
Product group:	Group: /	120	30	240	60	dim
Image label:	North Polar High Cloud Fraction (> 8km)					
Image parameter:	<i>npolar_highcloud_frac_img</i>	Group: /				
Observation grid:	<i>npolar_cloud_obs_grid (,)</i>	Group: /				
Statistical variables:	<i>npolar_highcloud_frac_min</i> <i>npolar_highcloud_frac_max</i> <i>npolar_highcloud_frac_mean</i> <i>npolar_highcloud_frac_sdev</i>	Group: /quality_assessment /atmosphere				
ATL09 variable(s):	<i>cloud_flag_atm ()</i> <i>layer_attr (,)</i> <i>layer_top (,)</i>	ATL09 Group: /profile_x /high_rate				
Control variable(s)	<i>weekly_obs_minimum</i> → <i>obs_minimum</i> (ATL16) <i>monthly_obs_minimum</i> → <i>obs_minimum</i> (ATL17)	Group: /ancillary_data /atmosphere				
PGE module:	npol_hmlt_cloud_frac_mod.f90					

Atmosphere Gridded Parameter Summary		ATL16		ATL17		
Long Name:	South Polar High Cloud Fraction (> 8km)	Lon	Lat	Lon	Lat	
Product variable:	<i>spolar_highcloud_frac (,)</i>	3.0	1.0	1.5	0.5	deg
Product group:	Group: /	120	30	240	60	dim
Image label:	South Polar High Cloud Fraction (> 8km)					
Image parameter:	<i>spolar_highcloud_frac_img</i>	Group: /				
Observation grid:	<i>spolar_cloud_obs_grid (,)</i>	Group: /				
Statistical variables:	<i>spolar_highcloud_frac_min</i> <i>spolar_highcloud_frac_max</i> <i>spolar_highcloud_frac_mean</i> <i>spolar_highcloud_frac_sdev</i>	Group: /quality_assessment /atmosphere				
ATL09 variable(s):	<i>cloud_flag_atm ()</i> <i>layer_attr (,)</i> <i>layer_top (,)</i>	ATL09 Group: /profile_x /high_rate				
Control variable(s)	<i>weekly_obs_minimum</i> → <i>obs_minimum</i> (ATL16) <i>monthly_obs_minimum</i> → <i>obs_minimum</i> (ATL17)	Group: /ancillary_data /atmosphere				
PGE module:	spol_hmlt_cloud_frac_mod.f90					

Atmosphere Gridded Parameter Summary		ATL16		ATL17		
Long Name:	North Polar Mid Cloud Fraction (> 4km and <=8km)	Lon	Lat	Lon	Lat	
Product variable:	<i>npolar_midcloud_frac</i> (,)	3.0	1.0	1.5	0.5	deg
Product group:	Group: /	120	30	240	60	dim
Image label:	North Polar Mid Cloud Fraction (> 4km and <=8km)					
Image parameter:	<i>npolar_midcloud_frac_img</i>	Group: /				
Observation grid:	<i>npolar_cloud_obs_grid</i> (,)	Group: /				
Statistical variables:	<i>npolar_midcloud_frac_min</i> <i>npolar_midcloud_frac_max</i> <i>npolar_midcloud_frac_mean</i> <i>npolar_midcloud_frac_sdev</i>	Group: /quality_assessment /atmosphere				
ATL09 variable(s):	<i>cloud_flag_atm</i> () <i>layer_attr</i> (,) <i>layer_top</i> (,)	ATL09 Group: /profile_x /high_rate				
Control variable(s)	<i>weekly_obs_minimum</i> → <i>obs_minimum</i> (ATL16) <i>monthly_obs_minimum</i> → <i>obs_minimum</i> (ATL17)	Group: /ancillary_data /atmosphere				
PGE module:	npol_hmlt_cloud_frac_mod.f90					

Atmosphere Gridded Parameter Summary		ATL16		ATL17		
Long Name:	South Polar Mid Cloud Fraction (> 4km and <=8km)	Lon	Lat	Lon	Lat	
Product variable:	<i>spolar_midcloud_frac</i> (,)	3.0	1.0	1.5	0.5	deg
Product group:	Group: /	120	30	240	60	dim
Image label:	South Polar Mid Cloud Fraction (> 4km and <=8km)					
Image parameter:	<i>spolar_midcloud_frac_img</i>	Group: /				
Observation grid:	<i>spolar_cloud_obs_grid</i> (,)	Group: /				
Statistical variables:	<i>spolar_midcloud_frac_min</i> <i>spolar_midcloud_frac_max</i> <i>spolar_midcloud_frac_mean</i> <i>spolar_midcloud_frac_sdev</i>	Group: /quality_assessment /atmosphere				
ATL09 variable(s):	<i>cloud_flag_atm</i> () <i>layer_attr</i> (,) <i>layer_top</i> (,)	ATL09 Group: /profile_x /high_rate				
Control variable(s)	<i>weekly_obs_minimum</i> → <i>obs_minimum</i> (ATL16) <i>monthly_obs_minimum</i> → <i>obs_minimum</i> (ATL17)	Group: /ancillary_data /atmosphere				
PGE module:	spol_hmlt_cloud_frac_mod.f90					

Atmosphere Gridded Parameter Summary		ATL16		ATL17		
Long Name:	North Polar Low Cloud Fraction (<= 4km)	Lon	Lat	Lon	Lat	
Product variable:	<i>npolar_lowcloud_frac</i> (,)	3.0	1.0	1.5	0.5	deg
Product group:	Group: /	120	30	240	60	dim
Image label:	North Polar Low Cloud Fraction (<= 4km)					
Image parameter:	<i>npolar_lowcloud_frac_img</i>	Group: /				
Observation grid:	<i>npolar_cloud_obs_grid</i> (,)	Group: /				
Statistical variables:	<i>npolar_lowcloud_frac_min</i> <i>npolar_lowcloud_frac_max</i> <i>npolar_lowcloud_frac_mean</i> <i>npolar_lowcloud_frac_sdev</i>	Group: /quality_assessment /atmosphere				
ATL09 variable(s):	<i>cloud_flag_atm</i> () <i>layer_attr</i> (,) <i>layer_top</i> (,)	ATL09 Group: /profile_x /high_rate				
Control variable(s)	<i>weekly_obs_minimum</i> → <i>obs_minimum</i> (ATL16) <i>monthly_obs_minimum</i> → <i>obs_minimum</i> (ATL17)	Group: /ancillary_data /atmosphere				
PGE module:	npol_hmlt_cloud_frac_mod.f90					

Atmosphere Gridded Parameter Summary		ATL16		ATL17		
Long Name:	South Polar Low Cloud Fraction (<= 4km)	Lon	Lat	Lon	Lat	
Product variable:	<i>spolar_lowcloud_frac</i> (,)	3.0	1.0	1.5	0.5	deg
Product group:	Group: /	120	30	240	60	dim
Image label:	South Polar Low Cloud Fraction (<= 4km)					
Image parameter:	<i>spolar_lowcloud_frac_img</i>	Group: /				
Observation grid:	<i>spolar_cloud_obs_grid</i> (,)	Group: /				
Statistical variables:	<i>spolar_lowcloud_frac_min</i> <i>spolar_lowcloud_frac_max</i> <i>spolar_lowcloud_frac_mean</i> <i>spolar_lowcloud_frac_sdev</i>	Group: /quality_assessment /atmosphere				
ATL09 variable(s):	<i>cloud_flag_atm</i> () <i>layer_attr</i> (,) <i>layer_top</i> (,)	ATL09 Group: /profile_x /high_rate				
Control variable(s)	<i>weekly_obs_minimum</i> → <i>obs_minimum</i> (ATL16) <i>monthly_obs_minimum</i> → <i>obs_minimum</i> (ATL17)	Group: /ancillary_data /atmosphere				
PGE module:	spol_hmlt_cloud_frac_mod.f90					

Atmosphere Gridded Parameter Summary		ATL16		ATL17		
Long Name:	North Polar Total Cloud Fraction	Lon	Lat	Lon	Lat	
Product variable:	<i>npolar_totalcloud_frac</i> (,)	3.0	1.0	1.5	0.5	deg
Product group:	Group: /	120	30	240	60	dim
Image label:	North Polar Total Cloud Fraction					
Image parameter:	<i>npolar_totalcloud_frac_img</i>	Group: /				
Observation grid:	<i>npolar_cloud_obs_grid</i> (,)	Group: /				
Statistical variables:	<i>npolar_totalcloud_frac_min</i> <i>npolar_totalcloud_frac_max</i> <i>npolar_totalcloud_frac_mean</i> <i>npolar_totalcloud_frac_sdev</i>	Group: /quality_assessment /atmosphere				
ATL09 variable(s):	<i>cloud_flag_atm</i> () <i>layer_attr</i> (,) <i>layer_top</i> (,)	ATL09 Group: /profile_x /high_rate				
Control variable(s)	<i>weekly_obs_minimum</i> → <i>obs_minimum</i> (ATL16) <i>monthly_obs_minimum</i> → <i>obs_minimum</i> (ATL17)	Group: /ancillary_data /atmosphere				
PGE module:	npol_hmlt_cloud_frac_mod.f90					

Atmosphere Gridded Parameter Summary		ATL16		ATL17		
Long Name:	South Polar Total Cloud Fraction	Lon	Lat	Lon	Lat	
Product variable:	<i>spolar_totalcloud_frac</i> (,)	3.0	1.0	1.5	0.5	deg
Product group:	Group: /	120	30	240	60	dim
Image label:	South Polar Total Cloud Fraction					
Image parameter:	<i>spolar_totalcloud_frac_img</i>	Group: /				
Observation grid:	<i>spolar_cloud_obs_grid</i> (,)	Group: /				
Statistical variables:	<i>spolar_totalcloud_frac_min</i> <i>spolar_totalcloud_frac_max</i> <i>spolar_totalcloud_frac_mean</i> <i>spolar_totalcloud_frac_sdev</i>	Group: /quality_assessment /atmosphere				
ATL09 variable(s):	<i>cloud_flag_atm</i> () <i>layer_attr</i> (,) <i>layer_top</i> (,)	ATL09 Group: /profile_x /high_rate				
Control variable(s)	<i>weekly_obs_minimum</i> → <i>obs_minimum</i> (ATL16) <i>monthly_obs_minimum</i> → <i>obs_minimum</i> (ATL17)	Group: /ancillary_data /atmosphere				
PGE module:	spol_hmlt_cloud_frac_mod.f90					

For each observation period (weekly/monthly) eight (8) separate polar grids are established that cover the latitude range 60N to 90N and 60S to 90S ("*npolar_highcloud_frac*", "*npolar_midcloud_frac*", "*npolar_lowcloud_frac*", "*npolar_totalcloud_frac*", "*spolar_highcloud_frac*", "*spolar_midcloud_frac*",

“*spolar_lowcloud_frac*”, and “*spolar_totalcloud_frac*”). For the polar regions, four (4) cloud fraction grids are created for each hemisphere. Grid 1 will contain the fraction of clouds that occur below and up to and including 4 km altitude. Grid 2 will contain the cloud fraction for clouds above 4 km and up to and including 8 km. Grid 3 will contain the cloud fraction for clouds that occur above 8 km. Grid 4 will represent total cloud fraction. So, there are four (4) grids for each polar region (four (4) North and four (4) South). The grids are populated in the same way as described in Section 3.1, except the low, middle, and high layers are segregated by the altitude of the cloud layer top.

NOTE that *layer_attr* has to be equal to 1 for the layer to be a cloud. The top height of the layers is contained in the ATLO9 parameter “*layer_top*”, which is dimensioned at 10 but the elements of *layer_top* will only be defined up to the number of layers found. The number of layers found is obtained from the ATLO9 parameter *cloud_flag_atm*. Thus, if *cloud_flag_atm* is = 0, that would mean that there were no clouds found in this profile. The *layer_top* (1) up to *layer_top* (*cloud_flag_atm*) are examined to obtain the top heights of the various cloud layers. NOTE: the parameters *cloud_flag_atm* () and *layer_attr* (,n) do not contain INVALID values in the profile observations. Therefore, no INVALID input profile observation testing is required for these parameters. The parameter *layer_top* (,n) will contain INVALID values in the profile observations. Therefore, INVALID input profile observation exception is required for this parameter.

Assuming *cloud_flag_atm* is > 0, then for each value of x from 1 to *cloud_flag_atm*:

- if any *layer_top* (x) is <= 4 km AND *layer_attr* = 1, then increment the counter for Grid 1.
- if any *layer_top* (x) is > 4 km and <= 8 km AND *layer_attr* = 1, then increment the counter for Grid 2.
- if any *layer_top* (x) is > 8 km AND *layer_attr* = 1, then increment the counter for Grid 3.
- if *cloud_flag_atm* is > 0 AND *layer_attr* = 1 for any layer, then increment the counter for Grid 4.

Note that each of the four (4) counter grids for each polar region are to be incremented (at most) only once per 25 Hz profile. This means if there are two cloud layers, between 4 and 8 km for example, the counter for Grid 2 is incremented only once, not twice.

A separate observation counter grid is established and the appropriate grid box is incremented for every 25 Hz profile regardless of the value of the value of *cloud_flag_atm*. Typically for the northern hemisphere or the southern hemisphere:

the pseudocode below represents the conditional logic for incrementing the “low (Grid 1), middle (Grid 2), high (Grid 3), and total (Grid 4) cloud counter grids”, i.e., the numerator grids, for all 25 Hz (high-rate) profile observations ():

```
for 25 Hz profile cloud_flag_atm () > 0
  for x from 1 to cloud_flag_atm
    for layer_top (,x) <= 4 and layer_attr (,x) = 1
      Grid 1 (low cloud) counter grid (i,j) = Grid 1 (low cloud) counter grid (i,j) + 1
    for layer_top (,x) > 4 and layer_top (x) <= 8 and layer_attr (,x) = 1
      Grid 2 (middle cloud) counter grid (i,j) = Grid 1 (middle cloud) counter grid (i,j) + 1
    for layer_top (,x) > 8 and layer_attr (,x) = 1
      Grid 3 (high cloud) counter grid (i,j) = Grid 3 (high cloud) counter grid (i,j) + 1
    for layer_attr (,n) = 1
      Grid 4 (total cloud) counter grid (i,j) = Grid 4 (total cloud) counter grid (i,j) + 1
  next profile observation
```

NOTE: a detected cloud layer counter grid is increment only for the first *layer_attr* (,n) = 1

the pseudocode below represents the logic for incrementing the “total observation grid”, i.e., the denominator grid, for all 25 Hz (high-rate) profile observations ():

```
for every 25 Hz profile
  total observation grid (i,j) = total observation grid (i,j) + 1
next profile observation
```

All four grids are then divided by the total observation grid (where it is > 0) to obtain the various cloud fractions (four (4) cloud fractions for each hemisphere). For cases where the number of observations for a grid box is less than *week_obs_minimum* (ATL16) or *month_obs_minimum* (ATL17), set the specific polar cloud fraction to INVALID.

the pseudocode below represents the conditional logic for calculating the “low (Grid 1), middle (Grid 2), high (Grid 3)m and total (Grid 4) polar cloud fraction grids” by division of the “low (Grid 1), middle (Grid 2), high (Grid 3)m and total (Grid 4) cloud counter grids”, i.e., the numerator grids, by the “total observation grid”, i.e., the denominator grid, for either the weekly or the monthly atmosphere gridded data product:

```

for total observation grid (i,j) => *_obs_minimum
    Grid 1 (low cloud) counter grid (i,j)
    Grid 1 (low) polar cloud fraction grid (i,j) = -----
                                                total observation grid (i,j)

    Grid 2 (middle cloud) counter grid (i,j)
    Grid 2 (middle) polar cloud fraction grid (i,j) = -----
                                                total observation grid (i,j)

    Grid 3 (high cloud) counter grid (i,j)
    Grid 3 (high) polar cloud fraction grid (i,j) = -----
                                                total observation grid (i,j)

    Grid 4 (total cloud) counter grid (i,j)
    Grid 4 (total) polar cloud fraction grid (i,j) = -----
                                                total observation grid (i,j)

else
    Grid 1 (low) polar cloud fraction grid (i,j) = INVALID
    Grid 2 (middle) polar cloud fraction grid (i,j) = INVALID
    Grid 3 (high) polar cloud fraction grid (i,j) = INVALID
    Grid 4 (total) polar cloud fraction grid (i,j) = INVALID
next grid cells

```

NOTE: *_obs_minimum represents either *weekly_obs_minimum* or *monthly_obs_minimum* based on product

3.3.2 Transmissive and Opaque Cloud Fraction

Atmosphere Gridded Parameter Summary		ATL16		ATL17		
Long Name:	North Polar Transmissive Cloud Fraction	Lon	Lat	Lon	Lat	
Product variable:	<i>npolar_transcloud_frac</i> (,)	3.0	1.0	1.5	0.5	deg
Product group:	Group: /	120	30	240	60	dim
Image label:	North Polar Transmissive Cloud Fraction					
Image parameter:	<i>npolar_transcloud_frac_img</i>	Group: /				
Observation grid:	<i>npolar_cloud_obs_grid</i> (,)	Group: /				
Statistical variables:	<i>npolar_transcloud_frac_min</i> <i>npolar_transcloud_frac_max</i> <i>npolar_transcloud_frac_mean</i> <i>npolar_transcloud_frac_sdev</i>	Group: /quality_assessment /atmosphere				
ATL09 variable(s):	<i>cloud_flag_atm</i> () <i>layer_attr</i> (,) <i>surface_sig</i> ()	ATL09 Group: /profile_x /high_rate				
Control variable(s)	<i>weekly_obs_minimum</i> → <i>obs_minimum</i> (ATL16) <i>monthly_obs_minimum</i> → <i>obs_minimum</i> (ATL17)	Group: /ancillary_data /atmosphere				
PGE module:	npol_to_cloud_frac_mod.f90					

Atmosphere Gridded Parameter Summary		ATL16		ATL17		
Long Name:	South Polar Transmissive Cloud Fraction	Lon	Lat	Lon	Lat	
Product variable:	<i>spolar_transcloud_frac</i> (,)	3.0	1.0	1.5	0.5	deg
Product group:	Group: /	120	30	240	60	dim
Image label:	South Polar Transmissive Cloud Fraction					
Image parameter:	<i>spolar_transcloud_frac_img</i>	Group: /				
Observation grid:	<i>spolar_cloud_obs_grid</i> (,)	Group: /				
Statistical variables:	<i>spolar_transcloud_frac_min</i> <i>spolar_transcloud_frac_max</i> <i>spolar_transcloud_frac_mean</i> <i>spolar_transcloud_frac_sdev</i>	Group: /quality_assessment /atmosphere				
ATL09 variable(s):	<i>cloud_flag_atm</i> () <i>layer_attr</i> (,) <i>surface_sig</i> ()	ATL09 Group: /profile_x /high_rate				
Control variable(s)	<i>weekly_obs_minimum</i> → <i>obs_minimum</i> (ATL16) <i>monthly_obs_minimum</i> → <i>obs_minimum</i> (ATL17)	Group: /ancillary_data /atmosphere				
PGE module:	spol_to_cloud_frac_mod.f90					

Atmosphere Gridded Parameter Summary		ATL16		ATL17		
Long Name:	North Polar Opaque Cloud Fraction	Lon	Lat	Lon	Lat	
Product variable:	<i>npolar_opaquecloud_frac (,)</i>	3.0	1.0	1.5	0.5	deg
Product group:	Group: /	120	30	240	60	dim
Image label:	North Polar Opaque Cloud Fraction					
Image parameter:	<i>npolar_opaquecloud_frac_img</i>	Group: /				
Observation grid:	<i>npolar_cloud_obs_grid (,)</i>	Group: /				
Statistical variables:	<i>npolar_opaquecloud_frac_min</i> <i>npolar_opaquecloud_frac_max</i> <i>npolar_opaquecloud_frac_mean</i> <i>npolar_opaquecloud_frac_sdev</i>	Group: /quality_assessment /atmosphere				
ATL09 variable(s):	<i>cloud_flag_atm ()</i> <i>layer_attr (,)</i> <i>surface_sig ()</i>	ATL09 Group: /profile_x /high_rate				
Control variable(s)	<i>weekly_obs_minimum</i> → <i>obs_minimum</i> (ATL16) <i>monthly_obs_minimum</i> → <i>obs_minimum</i> (ATL17)	Group: /ancillary_data /atmosphere				
PGE module:	npol_to_cloud_frac_mod.f90					

Atmosphere Gridded Parameter Summary		ATL16		ATL17		
Long Name:	South Polar Opaque Cloud Fraction	Lon	Lat	Lon	Lat	
Product variable:	<i>spolar_opaquecloud_frac (,)</i>	3.0	1.0	1.5	0.5	deg
Product group:	Group: /	120	30	240	60	dim
Image label:	South Polar Opaque Cloud Fraction					
Image parameter:	<i>spolar_opaquecloud_frac_img</i>	Group: /				
Observation grid:	<i>spolar_cloud_obs_grid (,)</i>	Group: /				
Statistical variables:	<i>spolar_opaquecloud_frac_min</i> <i>spolar_opaquecloud_frac_max</i> <i>spolar_opaquecloud_frac_mean</i> <i>spolar_opaquecloud_frac_sdev</i>	Group: /quality_assessment /atmosphere				
ATL09 variable(s):	<i>cloud_flag_atm ()</i> <i>layer_attr (,)</i> <i>surface_sig ()</i>	ATL09 Group: /profile_x /high_rate				
Control variable(s)	<i>weekly_obs_minimum</i> → <i>obs_minimum</i> (ATL16) <i>monthly_obs_minimum</i> → <i>obs_minimum</i> (ATL17)	Group: /ancillary_data /atmosphere				
PGE module:	spol_to_cloud_frac_mod.f90					

Four polar grids are established, two for each hemisphere ("*npolar_transcloud_frac*", "*npolar_opaquecloud_frac*", "*spolar_transcloud_frac*", and "*spolar_opaquecloud_frac*"). As in Section 3.3.1, the grids will cover the latitudes 60N to 90N and 60S to 90S. The ATL09 product contains the

parameter “*cloud_flag_atm*” which is the number of cloud layers detected for a given 25 Hz profile. When this parameter is > 0, AND the ATL09 parameter “*surface_sig*” is > 0 AND “*layer_attr*” = 1 for any layer, then the current grid box for the transmissive cloud counter grid is incremented. When the parameter “*cloud_flag_atm*” is > 0 AND the parameter “*surface_sig*” is = 0 AND “*layer_attr*” = 1, then the current grid box for the opaque cloud counter grid is incremented. As before, for each observation (25 Hz profile) the current total observation grid box is incremented by one (1). NOTE: the input parameters *cloud_flag_atm* (), *layer_attr* (n), and *surface_sig* () do not contain INVALID values in the profile observations. Therefore, no INVALID input profile observation testing is required. Typically for the northern hemisphere or the southern hemisphere:

the pseudocode below represents the conditional logic for incrementing the “ <i>transmissive cloud counter grid</i> ” and “ <i>opaque cloud counter grid</i> ”, i.e., the numerator grids, for all 25 Hz (high-rate) profile observations ():
<pre> for 25 Hz profile <i>cloud_flag_atm</i> () > 0 for <i>surface_sig</i> () > 0.0 and <i>layer_attr</i> (n) = 1 transmissive cloud counter grid (i,j) = transmissive cloud counter grid (i,j) + 1 for <i>surface_sig</i> () = 0.0 and <i>layer_attr</i> (n) = 1 opaque cloud counter grid (i,j) = opaque cloud counter grid (i,j) + 1 next profile observation </pre>
NOTE: a detected cloud layer counter grid is increment only for the first <i>layer_attr</i> (n) = 1
the pseudocode below represents the logic for incrementing the “ <i>total observation grid</i> ”, i.e., the denominator grid, for all 25 Hz (high-rate) profile observations ():
<pre> for every 25 Hz profile total observation grid (i,j) = total observation grid (i,j) + 1 next profile observation </pre>

When the period in question (weekly/monthly) has been analyzed, divide the transmissive and opaque cloud counter grids by the total observation grid (for all observation grid boxes > 0). For cases where the number of observations for a grid box is less than *week_obs_minimum* (ATL16) or *month_obs_minimum* (ATL17), set the specific polar cloud fraction to INVALID.

the pseudocode below represent the conditional logic for calculating the “ <i>transmissive polar cloud fraction grid</i> ” and “ <i>opaque polar cloud fraction grid</i> ” by respective division of the “ <i>transmissive cloud counter grid</i> ” and “ <i>opaque cloud counter grid</i> ”, i.e., the numerator grids, by the “ <i>total observation grid</i> ”, i.e., the denominator grid, for either the weekly or the monthly atmosphere gridded data product:
<pre> for total observation grid (i,j) => *_obs_minimum transmissive polar cloud fraction grid (i,j) = $\frac{\text{transmissive cloud counter grid (i,j)}}{\text{total observation grid (i,j)}}$ opaque polar cloud fraction grid (i,j) = $\frac{\text{opaque cloud counter grid (i,j)}}{\text{total observation grid (i,j)}}$ else transmissive polar cloud fraction grid (i,j) = INVALID opaque polar cloud fraction grid (i,j) = INVALID next grid cell </pre>

NOTE: *_obs_minimum represents either *weekly_obs_minimum* or *monthly_obs_minimum* based on product

3.4 Blowing Snow Frequency

Atmosphere Gridded Parameter Summary		ATL16		ATL17		
Long Name:	North Polar Low-Rate Blowing Snow Frequency	Lon	Lat	Lon	Lat	
Product variable:	<i>npolar_lorate_blowing_snow_freq</i> (,)	3.0	1.0	1.5	0.5	deg
Product group:	Group: /	120	30	240	60	dim
Image label:	North Polar Low-Rate Blowing Snow Frequency (percent)					
Image parameter:	<i>npolar_lorate_blowing_snow_freq_img</i>	Group: /				
Observation grid:	<i>npolar_lorate_bsnow_obs_grid</i> (,)	Group: /				
Statistical variables:	<i>npolar_lorate_blowing_snow_freq_min</i> <i>npolar_lorate_blowing_snow_freq_max</i> <i>npolar_lorate_blowing_snow_freq_mean</i> <i>npolar_lorate_blowing_snow_freq_sdev</i>	Group: /quality_assessment /atmosphere				
ATL09 variable(s):	<i>bsnow_h</i> () <i>bsnow_con</i> ()	ATL09 Group: /profile_x /low_rate				
Control variable(s)	<i>weekly_obs_minimum</i> → <i>obs_minimum</i> (ATL16) <i>monthly_obs_minimum</i> → <i>obs_minimum</i> (ATL17)	Group: /ancillary_data /atmosphere				
PGE module:	npol_lorate_blosnow_freq_mod.f90					

Atmosphere Gridded Parameter Summary		ATL16		ATL17		
Long Name:	South Polar Low-Rate Blowing Snow Frequency	Lon	Lat	Lon	Lat	
Product variable:	<i>spolar_lorate_blowing_snow_freq</i> (,)	3.0	1.0	1.5	0.5	deg
Product group:	Group: /	120	30	240	60	dim
Image label:	South Polar Low-Rate Blowing Snow Frequency (percent)					
Image parameter:	<i>spolar_lorate_blowing_snow_freq_img</i>	Group: /				
Observation grid:	<i>spolar_lorate_bsnow_obs_grid</i> (,)	Group: /				
Statistical variables:	<i>spolar_lorate_blowing_snow_freq_min</i> <i>spolar_lorate_blowing_snow_freq_max</i> <i>spolar_lorate_blowing_snow_freq_mean</i> <i>spolar_lorate_blowing_snow_freq_sdev</i>	Group: /quality_assessment /atmosphere				
ATL09 variable(s):	<i>bsnow_h</i> () <i>bsnow_con</i> ()	ATL09 Group: /profile_x /low_rate				
Control variable(s)	<i>weekly_obs_minimum</i> → <i>obs_minimum</i> (ATL16) <i>monthly_obs_minimum</i> → <i>obs_minimum</i> (ATL17)	Group: /ancillary_data /atmosphere				
PGE module:	spol_lorate_blosnow_freq_mod.f90					

Atmosphere Gridded Parameter Summary		ATL16		ATL17		
Long Name:	North Polar High-Rate Blowing Snow Frequency	Lon	Lat	Lon	Lat	
Product variable:	<i>npolar_hirate_blowing_snow_freq (,)</i>	3.0	1.0	1.5	0.5	deg
Product group:	Group: /	120	30	240	60	dim
Image label:	North Polar High-Rate Blowing Snow Frequency (percent)					
Image parameter:	<i>npolar_hirate_blowing_snow_freq_img</i>	Group: /				
Observation grid:	<i>npolar_hirate_bsnow_obs_grid (,)</i>	Group: /				
Statistical variables:	<i>npolar_hirate_blowing_snow_freq_min</i> <i>npolar_hirate_blowing_snow_freq_max</i> <i>npolar_hirate_blowing_snow_freq_mean</i> <i>npolar_hirate_blowing_snow_freq_sdev</i>	Group: /quality_assessment /atmosphere				
ATL09 variable(s):	<i>bsnow_h ()</i> <i>bsnow_con ()</i>	ATL09 Group: /profile_x /high_rate				
Control variable(s)	<i>weekly_obs_minimum</i> → <i>obs_minimum</i> (ATL16) <i>monthly_obs_minimum</i> → <i>obs_minimum</i> (ATL17)	Group: /ancillary_data /atmosphere				
PGE module:	npol_hirate_blosnow_freq_mod.f90					

Atmosphere Gridded Parameter Summary		ATL16		ATL17		
Long Name:	South Polar High-Rate Blowing Snow Frequency	Lon	Lat	Lon	Lat	
Product variable:	<i>spolar_hirate_blowing_snow_freq (,)</i>	3.0	1.0	1.5	0.5	deg
Product group:	Group: /	120	30	240	60	dim
Image label:	South Polar High-Rate Blowing Snow Frequency (percent)					
Image parameter:	<i>spolar_hirate_blowing_snow_freq_img</i>	Group: /				
Observation grid:	<i>spolar_hirate_bsnow_obs_grid (,)</i>	Group: /				
Statistical variables:	<i>spolar_hirate_blowing_snow_freq_min</i> <i>spolar_hirate_blowing_snow_freq_max</i> <i>spolar_hirate_blowing_snow_freq_mean</i> <i>spolar_hirate_blowing_snow_freq_sdev</i>	Group: /quality_assessment /atmosphere				
ATL09 variable(s):	<i>bsnow_h ()</i> <i>bsnow_con ()</i>	ATL09 Group: /profile_x /high_rate				
Control variable(s)	<i>weekly_obs_minimum</i> → <i>obs_minimum</i> (ATL16) <i>monthly_obs_minimum</i> → <i>obs_minimum</i> (ATL17)	Group: /ancillary_data /atmosphere				
PGE module:	spol_hirate_blosnow_freq_mod.f90					

On the ATL09 product is the parameter blowing snow layer thickness, *bsnow_h* (i.e., height above the surface in meters to the top of the blowing snow layer), at both high-rate (i.e., 25 Hz) and low-rate (i.e., 1 Hz). Originally stated in the ATBD: to create the blowing snow frequency, the low-rate (1 second)

blowing snow height will be used. Previous releases of ATL16 and ATL17 only contained blowing snow frequency computed using the low-rate profile data. Now with this version two detection grids and two observation grids are collected to cover the polar regions (poleward of 60 degrees North and South). The low-rate profile data continues to be used for the production of both North and South polar low-rate blowing snow frequency. The additional high-rate profile data in the new high-rate detection and observation grids is now used for the production of the new North and South polar high-rate blowing snow frequency gridded parameters.

In general, blowing snow height, *bsnow_h*, will only be > 0.0 (and not INVALID) when there is a detected blowing snow layer. Thus, when the latitude is poleward of 60N or 60S and whenever *bsnow_h* > 0.0 (and not INVALID), increment the grid box of the detection grid corresponding to the current latitude/longitude by one (1). If blowing snow confidence, *bsnow_con* is greater than or equal to -2 (but not INVALID), then increment the observation grid box of the current location by one (1). If *bsnow_con* is less than -2, it indicates that the surface was not detected. In this case do not consider it an observation and thus do not increment the observation grid (denominator). NOTE: the input parameters *bsnow_h* () and *bsnow_con* () will contain INVALID values in the profile observations. Therefore, INVALID input profile observation exception is required for these parameters.

With the requirement to produce both low-rate and high-rate blowing snow frequency as gridded parameters (“*npolar_lorate_blowing_snow_freq*”, “*spolar_lorate_blowing_snow_freq*”, “*npolar_hirate_blowing_snow_freq*”, and “*spolar_hirate_blowing_snow_freq*”), inputs and outputs must be discriminated into low-rate (*lorate_*) and high-rate (*hirate_*) input sources and output destinations.

Typically for the northern hemisphere or the southern hemisphere, the low-rate blowing snow profile data is processed as follows:

the pseudocode below represents the conditional logic for incrementing the “ <i>low-rate blowing snow detection grid</i> ”, i.e., the numerator grid, based on the filtered and accepted 1 Hz (low-rate) profile observations ():
<pre> for every 1 Hz profile occurrence of <i>lorate_bsnow_h</i> () ≠ INVALID for <i>lorate_bsnow_h</i> () > 0.0 low-rate blowing snow detection grid (i,j) = low-rate blowing snow detection grid (i,j) + 1 next 1 Hz profile observation </pre>
a low-rate blowing snow layer has been detected
the pseudocode below represents the conditional logic for incrementing the “ <i>low-rate blowing snow observation grid</i> ”, i.e., the denominator grid, based on the filtered and accepted 1 Hz (low-rate) profile observations ():
<pre> for every 1 Hz profile occurrence of <i>lorate_bsnow_con</i> () ≠ INVALID for <i>lorate_bsnow_con</i> () => -2 low-rate blowing snow observation grid (i,j) = low-rate blowing snow observation grid (i,j) + 1 next 1 Hz profile observation </pre>

Similarly, typical for the northern hemisphere or the southern hemisphere, the high-rate blowing snow profile data is processed as follows:

the pseudocode below represents the conditional logic for incrementing the “ <i>high-rate blowing snow detection grid</i> ”, i.e., the numerator grid, based on the filtered and accepted 25 Hz (high-rate) profile observations ():
<pre> for every 25 Hz profile occurrence of <i>hirate_bsnow_h</i> () ≠ INVALID for <i>hirate_bsnow_h</i> () > 0.0 high-rate blowing snow detection grid (i,j) = high-rate blowing snow detection grid (i,j) + 1 next 25 Hz profile observation </pre>
a high-rate blowing snow layer has been detected
the pseudocode below represents the conditional logic for incrementing the “ <i>high-rate blowing snow observation grid</i> ”, i.e., the denominator grid, based on the filtered and accepted 25 Hz (high-rate) profile observations ():
<pre> for every 25 Hz profile occurrence of <i>hirate_bsnow_con</i> () ≠ INVALID for <i>hirate_bsnow_con</i> () => -2 high-rate blowing snow observation grid (i,j) = high-rate blowing snow observation grid (i,j) + 1 next 25 Hz profile observation </pre>

After all ATL09 files for the period in question have been processed in this way, the blowing snow frequency grid is obtained by dividing the detection grid by the observation grid (where the observation count equals or exceeds the product observation count minimum), and then multiplying by 100 to obtain percent. For cases where the number of observations for a grid box is less than *week_obs_minimum* (ATL16) or *month_obs_minimum* (ATL17), set the blowing snow frequency to INVALID.

Note that blowing snow frequency is the only parameter reported with units of percent.

For the northern hemisphere or the southern hemisphere, the low-rate blowing snow frequency gridded parameter is obtained as follows:

the pseudocode below represents the conditional logic for calculating the “ <i>low-rate blowing snow frequency polar grid</i> ” in percent by division of the “ <i>low-rate blowing snow detection grid</i> ”, i.e., the numerator grid, by the “ <i>low-rate blowing snow observation grid</i> ”, i.e., the denominator grid, then multiplying by 100, for either the weekly or the monthly atmosphere gridded data product:
<pre> for low-rate blowing snow observation grid (i,j) => <i>*_obs_minimum</i> low-rate blowing snow frequency polar grid (i,j) = $\frac{\text{low-rate blowing snow detection grid (i,j)}}{\text{low-rate blowing snow observation grid (i,j)}} \times 100$ else low-rate blowing snow frequency polar grid (i,j) = INVALID next grid cell </pre>
NOTE: <i>*_obs_minimum</i> represents either <i>weekly_obs_minimum</i> or <i>monthly_obs_minimum</i> based on product

For the northern hemisphere or the southern hemisphere, the high-rate blowing snow frequency gridded parameter is obtained as follows:

the pseudocode below represents the conditional logic for calculating the “*high-rate blowing snow frequency polar grid*” in percent by division of the “*high-rate blowing snow detection grid*”, i.e., the numerator grid, by the “*high-rate blowing snow observation grid*”, i.e., the denominator grid, then multiplying by 100, for either the weekly or the monthly atmosphere gridded data product:

```
for high-rate blowing snow observation grid (i,j) => *_obs_minimum
    high-rate blowing snow detection grid (i,j)
    high-rate blowing snow frequency polar grid (i,j) = ----- X 100
    high-rate blowing snow observation grid (i,j)
else
    high-rate blowing snow frequency polar grid (i,j) = INVALID
next grid cell
```

NOTE: *_obs_minimum represents either *weekly_obs_minimum* or *monthly_obs_minimum* based on product

3.5 Apparent Surface Reflectivity (ASR)

Atmosphere Gridded Parameter Summary		ATL16		ATL17		
Long Name:	Global Apparent Surface Reflectance	Lon	Lat	Lon	Lat	
Product variable:	global_asr (,)	3.0	3.0	1.0	1.0	deg
Product group:	Group: /	120	60	360	180	dim
Image label:	Global Apparent Surface Reflectance (0-1)					
Image parameter:	global_asr_img	Group: /				
Observation grid:	global_asr_obs_grid (,)	Group: /				
Statistical variables:	global_asr_min global_asr_max global_asr_mean global_asr_sdev	Group: /quality_assessment /atmosphere				
ATL09 variable(s):	apparent_surf_reflec ()	ATL09 Group: /profile_x /high_rate				
Control variable(s)	weekly_obs_minimum → obs_minimum (ATL16) monthly_obs_minimum → obs_minimum (ATL17)	Group: /ancillary_data /atmosphere				
PGE module:	glob_asr_mod.f90					

Atmosphere Gridded Parameter Summary		ATL16		ATL17		
Long Name:	North Polar Apparent Surface Reflectance	Lon	Lat	Lon	Lat	
Product variable:	nploar_asr (,)	3.0	1.0	1.5	0.5	deg
Product group:	Group: /	120	30	240	60	dim
Image label:	North Polar Apparent Surface Reflectance (0-1)					
Image parameter:	nploar_asr_img	Group: /				
Observation grid:	nploar_asr_obs_grid (,)	Group: /				
Statistical variables:	nploar_asr_min nploar_asr_max nploar_asr_mean nploar_asr_sdev	Group: /quality_assessment /atmosphere				
ATL09 variable(s):	apparent_surf_reflec ()	ATL09 Group: /profile_x /high_rate				
Control variable(s)	weekly_obs_minimum → obs_minimum (ATL16) monthly_obs_minimum → obs_minimum (ATL17)	Group: /ancillary_data /atmosphere				
PGE module:	npol_asr_mod.f90					

Atmosphere Gridded Parameter Summary		ATL16		ATL17		
Long Name:	South Polar Apparent Surface Reflectance	Lon	Lat	Lon	Lat	
Product variable:	sploar_asr (,)	3.0	1.0	1.5	0.5	deg
Product group:	Group: /	120	30	240	60	dim
Image label:	South Polar Apparent Surface Reflectance (0-1)					
Image parameter:	sploar_asr_img	Group: /				
Observation grid:	sploar_asr_obs_grid (,)	Group: /				
Statistical variables:	sploar_asr_min sploar_asr_max sploar_asr_mean sploar_asr_sdev	Group: /quality_assessment /atmosphere				
ATL09 variable(s):	apparent_surf_reflec ()	ATL09 Group: /profile_x /high_rate				
Control variable(s)	weekly_obs_minimum → obs_minimum (ATL16) monthly_obs_minimum → obs_minimum (ATL17)	Group: /ancillary_data /atmosphere				
PGE module:	spol_asr_mod.f90					

Apparent Surface Reflectivity (ASR) represents the true surface reflectivity modified by the two-way atmospheric transmission. It will generally be a number between 0 and 1. ASR is related to the ratio of the received energy to the transmitted energy and assumes a Lambertian surface reflectance. North and South polar grids and a global grid are established at the longitude and latitude grid size resolution and the dimensions for the weekly product, and for the monthly product, according to values contained in Table 2. The parameter [apparent_surf_reflec](#) on ATL09 will have a value of 0.0 unless there was a signal detected from the surface (i.e., correspondingly, [surface_sig](#) > 0.0). When the latitude is poleward of 60N or 60S and the parameter [apparent_surf_reflec](#) is greater than 0.0, it (i.e., [apparent_surf_reflec](#)) is added to the ASR (summation) grid box at the current location and the corresponding ASR observation grid box is incremented. If the ASR is equal to 0.0, do nothing. NOTE: the input parameters [apparent_surf_reflec \(\)](#) and [surface_sig \(\)](#) do not contain INVALID values in the profile observations. Therefore, no INVALID input profile observation testing is required.

For the global grid, and typically for the northern hemisphere or the southern hemisphere:

<p>the pseudocode below represents the logic for selected accumulation of the “ASR (summation) global grid” and the “ASR (summation) polar grid”, i.e., the numerator grids, and for selected increment of the corresponding “global ASR observation grid” and “polar ASR observation grid”, i.e., the denominator grids, based on the filtered and accepted 25 Hz (high-rate) profile observations ():</p>
<p>for 25 Hz profile apparent_surf_reflec () > 0.0</p> <p>ASR (summation) global grid (i,j) = ASR (summation) global grid (i,j) + apparent_surf_reflec ()</p> <p>ASR (summation) polar grid (i,j) = ASR (summation) polar grid (i,j) + apparent_surf_reflec ()</p> <p>global ASR observation grid (i,j) = global ASR observation grid (i,j) + 1</p> <p>polar ASR observation grid (i,j) = polar ASR observation grid (i,j) + 1</p> <p>next profile observation</p>

After the period in question has been processed, the ASR grid is divided by the observation grid to get the average ASR grid (“*global_asr*”, “*npolar_asr*”, and “*spolar_asr*”). For cases where the number of observations for a grid box is less than *week_obs_minimum* (ATL16) or *month_obs_minimum* (ATL17), set the ASR to INVALID. For the global grid, and typically for the northern hemisphere or the southern hemisphere:

the pseudocode below represents the conditional logic for calculating the “*average ASR global grid*” and the “*average ASR polar grid*” by respective division of the “*ASR (summation) global grid*” and “*ASR (summation) polar grid*”, i.e., the numerator grids, by the “*global ASR observation grid*” and “*polar ASR observation grid*”, i.e., the denominator grids, for either the weekly or the monthly atmosphere gridded data product:

```

for total observation grid (i,j) => *_obs_minimum
    ASR (summation) global grid (i,j)
    average ASR global grid (i,j) = -----
                                   global observation grid (i,j)
    ASR (summation) polar grid (i,j)
    average ASR polar grid (i,j) = -----
                                   polar observation grid (i,j)
else
    average ASR global grid (i,j) = INVALID
    average ASR polar grid (i,j) = INVALID
next grid cell

```

NOTE: *_obs_minimum represents either *weekly_obs_minimum* or *monthly_obs_minimum* based on product

It is further noted here that generic polar grid representations above are discriminated in implementation to north polar and south polar parameters.

3.6 Ground Detection Frequency

Atmosphere Gridded Parameter Summary		ATL16		ATL17		
Long Name:	Global Ground Detection Frequency	Lon	Lat	Lon	Lat	
Product variable:	<i>global_grnd_detect (,)</i>	3.0	3.0	1.0	1.0	deg
Product group:	Group: /	120	60	360	180	dim
Image label:	Global Ground Detection Frequency (fraction)					
Image parameter:	<i>global_grnd_detect_img</i>	Group: /				
Observation grid:	<i>global_cloud_aerosol_obs_grid (,)</i>	Group: /				
Statistical variables:	<i>global_grnd_detect_min</i> <i>global_grnd_detect_max</i> <i>global_grnd_detect_mean</i> <i>global_grnd_detect_sdev</i>	Group: /quality_assessment /atmosphere				
ATL09 variable(s):	<i>surface_sig ()</i>	ATL09 Group: /profile_x /high_rate				
Control variable(s)	<i>weekly_obs_minimum</i> → <i>obs_minimum</i> (ATL16) <i>monthly_obs_minimum</i> → <i>obs_minimum</i> (ATL17)	Group: /ancillary_data /atmosphere				
PGE module:	glob_grnd_detect_freq_mod.f90					

Atmosphere Gridded Parameter Summary		ATL16		ATL17		
Long Name:	North Polar Ground Detection Frequency	Lon	Lat	Lon	Lat	
Product variable:	<i>nploar_grnd_detect (,)</i>	3.0	1.0	1.5	0.5	deg
Product group:	Group: /	120	30	240	60	dim
Image label:	North Polar Ground Detection Frequency (fraction)					
Image parameter:	<i>nploar_grnd_detect_img</i>	Group: /				
Observation grid:	<i>npolar_cloud_obs_grid (,)</i>	Group: /				
Statistical variables:	<i>nploar_grnd_detect_min</i> <i>nploar_grnd_detect_max</i> <i>nploar_grnd_detect_mean</i> <i>nploar_grnd_detect_sdev</i>	Group: /quality_assessment /atmosphere				
ATL09 variable(s):	<i>surface_sig ()</i>	ATL09 Group: /profile_x /high_rate				
Control variable(s)	<i>weekly_obs_minimum</i> → <i>obs_minimum</i> (ATL16) <i>monthly_obs_minimum</i> → <i>obs_minimum</i> (ATL17)	Group: /ancillary_data /atmosphere				
PGE module:	npol_grnd_detect_freq_mod.f90					

Atmosphere Gridded Parameter Summary		ATL16		ATL17		
Long Name:	South Polar Ground Detection Frequency	Lon	Lat	Lon	Lat	
Product variable:	sploar_grnd_detect (,)	3.0	1.0	1.5	0.5	deg
Product group:	Group: /	120	30	240	60	dim
Image label:	South Polar Ground Detection Frequency (fraction)					
Image parameter:	sploar_grnd_detect_img	Group: /				
Observation grid:	spolar_cloud_obs_grid (,)	Group: /				
Statistical variables:	sploar_grnd_detect_min sploar_grnd_detect_max sploar_grnd_detect_mean sploar_grnd_detect_sdev	Group: /quality_assessment /atmosphere				
ATL09 variable(s):	surface_sig ()	ATL09 Group: /profile_x /high_rate				
Control variable(s)	weekly_obs_minimum → obs_minimum (ATL16) monthly_obs_minimum → obs_minimum (ATL17)	Group: /ancillary_data /atmosphere				
PGE module:	spol_grnd_detect_freq_mod.f90					

For ground detection frequency (“[global_grnd_detect](#)”, “[npolar_grnd_detect](#)”, and “[spolar_grnd_detect](#)”), the ATL09 high-rate parameter [surface_sig](#) (i.e., surface signal count, the number of photons in the surface bin) should be used. This will be 0.0 unless the surface signal was detected. North and South Polar grids and a global grid are set up as in Section 3.5 above, and when [surface_sig](#) is > 0.0, the surface signal detection grid box at the current location is incremented. The corresponding observation grid box is incremented regardless of the value of [surface_sig](#). NOTE: the input parameter [surface_sig \(\)](#) does not contain INVALID values in the profile observations. Therefore, no INVALID input profile observation testing is required.

For the global grid and typically for the northern hemisphere or the southern hemisphere:

the pseudocode below represents the conditional logic for incrementing the “ <i>surface signal detection global grid</i> ” and the “ <i>surface signal detection polar grid</i> ”, i.e., the numerator grids, for all 25 Hz (high-rate) profile observations ():
<pre> for 25 Hz profile surface_sig () > 0.0 surface signal detection global grid (i,j) = surface signal detection global grid (i,j) + 1 surface signal detection polar grid (i,j) = surface signal detection polar grid (i,j) + 1 next profile observation </pre>

the pseudocode below represents the logic for incrementing the “*global observation grid*” and “*polar observation grid*”, i.e., the denominator grids, for all 25 Hz (high-rate) profile observations ():

```

for every 25 Hz profile
  global observation grid (i,j) = global observation grid (i,j) + 1
  polar observation grid (i,j) = polar observation grid (i,j) + 1
next profile observation

```

After the period in question has been processed, the ground detection frequency is calculated by dividing the surface signal grid by the observation grid for values of the observation grid equal to or exceeding the product observation minimum count value. For cases where the number of observations for a grid box is less than *week_obs_minimum* (ATL16) or *month_obs_minimum* (ATL17), set the ground detection frequency to INVALID.

the pseudocode below represents the conditional logic for calculating the “*ground detection frequency global grid*” and the “*ground detection frequency polar grid*” by respective division of the “*surface signal detection global grid*” and “*surface signal detection polar grid*”, i.e., the numerator grids, by the “*global observation grid*” and “*polar observation grid*”, i.e., the denominator grids, for either the weekly or the monthly atmosphere gridded data product:

```

for total observation grid (i,j) => *_obs_minimum
  ground detection frequency global grid (i,j) =  $\frac{\text{surface signal detection global grid (i,j)}}{\text{global observation grid (i,j)}}$ 
  ground detection frequency polar grid (i,j) =  $\frac{\text{surface signal detection polar grid (i,j)}}{\text{polar observation grid (i,j)}}$ 
else
  ground detection frequency global grid (i,j) = INVALID
  ground detection frequency polar grid (i,j) = INVALID
next grid cell

```

NOTE: *_obs_minimum represents either *weekly_obs_minimum* or *monthly_obs_minimum* based on product

It is further noted here that generic polar grid representations above are discriminated in implementation to north polar and south polar parameters.

3.7 Images of Gridded Fields

Included on both products will be images of selected atmospheric variables. The global and polar atmosphere gridded parameters' grid images will overlay map images showing continental and country boundaries. Polar stereographic projection is used for the polar plots and equirectangular projection for the global images. The images can be either jpeg or png format. See the bottom of Table 5 for a list of images to be included on the products. The images have the same root name as the atmosphere gridded parameters with the added suffix “_img”. For example, for the gridded parameter “global_cloud_frac” will be incorporated as the image “global_cloud_frac_img”. NOTE that the list of images contained in Table 5 is not meant to be definitive. It is acceptable if images of other data fields are included.

NOTE: the image labels are included with the HDF5 product templates for the ATL16 and ATL17 products. These labels are embedded are part of the global (rectangular) projection images and the polar (stereographic) projection images in the weekly ATL16 or the monthly ATL17 atmosphere gridded data products. For the images listed in Table 5, the contents of the Description fields are the actual label character strings that are included in the product templates and will be applied to the generated gridded parameter global and polar projection images.

3.8 Minimum Number of Observations for Each Grid Box

In the computation of the various data fields, the data are divided by the number of observations in each grid box. For the ATBD Version 2.2a, we introduce two new control parameters called *week_obs_minimum* and *month_obs_minimum*. If the number of observations for a given grid box is less than *week_obs_minimum* for ATL16, then the value of that grid box is set to INVALID. It would be as if there were no observations at all for that grid box. If the number of observations is less than *month_obs_minimum* for ATL17, then the value of that grid box is set to INVALID. The nominal values for these parameters are: *week_obs_minimum* = 2 and *month_obs_minimum* = 4. These values are implemented within the code as constants and defaults. Control file execution overrides for these parameters will be available for replacement of these default values.

3.9 Observations Grids

For Version 2.1 of this ATBD the following five (5) observation grids were added to the products:

North Polar Blowing Snow Frequency – new parameter “npolar_bsnow_obs_grid” [*now Low-Rate below*]

South Polar Blowing Snow Frequency – new parameter “spolar_bsnow_obs_grid” [*now Low-Rate below*]

Global ASR – new parameter “asr_obs_grid”

Global (Over Water) Total Column Optical Depth - “tcod_obs_grid”

Global Cloud or Aerosol Fraction - “global_cloud_aerosol_obs_grid”

With this latest ATBD Version 3.1c DRAFT, the two existing (low-rate profile) polar blowing snow frequency observation count grids are expanded and renamed as a result of the addition of the high-rate profile polar blowing snow frequency observation count grids. Subsequently, the following four (4) polar blowing snow observation count grids replace the previous two (2) count grids:

North Polar Low-Rate Blowing Snow Frequency – new parameter “npolar_lorate_bsnow_obs_grid”

South Polar Low-Rate Blowing Snow Frequency – new parameter “spolar_lorate_bsnow_obs_grid”

North Polar High-Rate Blowing Snow Frequency – new parameter “npolar_hirate_bsnow_obs_grid”

South Polar High-Rate Blowing Snow Frequency – new parameter “spolar_hirate_bsnow_obs_grid”

NOTE: the parameters “npolar_bsnow_obs_grid” and “spolar_bsnow_obs_grid” included in the Version 2 ATL16/ATL17 products are now renamed to “npolar_lorate_bsnow_obs_grid” and “spolar_lorate_bsnow_obs_grid” observation grid parameters to clearly discriminate from the new high-rate profile data polar blowing snow frequency grid count parameters.

With the ATBD Version 3.2 DRAFT, 17 March 2021, an observation count grid has been added for the Expanded Global Total Column Optical Depth (Over Water):

Expanded Global (Over Water) Total Column Optical Depth - “exp_tcod_obs_grid”

These observation grids are loaded from a selected set of “denominator grids” representing the logically filtered observation counter grids or the total observation grids collected in earlier sections above for the following parameters listed in Table 4 below:

Table 4. Atmosphere Gridded Products Observation Grid Parameters, Sources, Applicable Parameters

observation [count] grid parameter	Section	atmosphere gridded parameter algorithm source: count	applicable to atmosphere gridded parameters
global_cloud_aerosol_obs_grid (i,j)	3.1, 3.1.1, 3.1.2, 3.1.3, 3.1.4, 3.6	global cloud fraction: count of every 25 Hz profile observation	global_cloud_frac (i,j) , combined_global_cloud_frac (i,j) , global_aerosol_frac (i,j) , global_clear_frac (i,j) , global_grnd_detect (i,j)
tcod_obs_grid (i,j)	3.2, 3.2.1	[global] total column optical depth: count of every valid 25 Hz profile apparent surface reflectance column optical depth [column_od_asr () > 0.0] over water [column_od_asr_qf () = 4] observation	global_column_od (i,j)
exp_tcod_obs_grid (i,j)	3.2, 3.2.2	expanded [global] total column optical depth: count of every valid 25 Hz profile apparent surface reflectance column optical depth [column_od_asr () > 0.0] over water [column_od_asr_qf () = 4] observation, plus estimated column optical depth from asr values for column_od_asr () = INVALID over water for expanded global average total column optical depth over water	expanded_global_column_od(i,j)
global_asr_obs_grid (i,j)	3.5	[global] apparent surface reflectance (ASR): count of every 25 Hz profile surface signal detected ASR [apparent_surf_reflec () > 0.0] observation	global_asr (i,j)
npolar_lorate_bsnow_obs_grid (i,j)	3.4	[north polar low-rate] blowing snow frequency: count of every valid 1 Hz blowing snow layer detected confidence [bsnow_con () >= -2] observation in the northern polar region	npolar_lorate_blowing_snow_freq (i,j)
spolar_lorate_bsnow_obs_grid (i,j)	3.4	[south polar low-rate] blowing snow frequency: count of every valid 1 Hz blowing snow layer detected confidence [bsnow_con () >= -2] observation in the southern polar region	spolar_lorate_blowing_snow_freq (i,j)
npolar_hirate_bsnow_obs_grid (i,j)	3.4	[north polar high-rate] blowing snow frequency: count of every valid 25 Hz blowing snow layer detected confidence [bsnow_con () >= -2] observation in the northern polar region	npolar_hirate_blowing_snow_freq (i,j)

observation [count] grid parameter	Section	atmosphere gridded parameter algorithm source: count	applicable to atmosphere gridded parameters
spolar_hirate_bsnow_obs_grid (i,j)	3.4	[south polar high-rate] blowing snow frequency: count of every valid 25 Hz blowing snow layer detected confidence <i>[bsnow_con () >= -2]</i> observation in the southern polar region	spolar_hirate_blowing_snow_freq (i,j)
npolar_cloud_obs_grid (i,j)	3.1, 3.3.1, 3.6	[north] polar total cloud fraction: count of every 25 Hz profile observation in the northern polar region	npolar_lowcloud_frac (i,j), npolar_midcloud_frac (i,j), npolar_highcloud_frac (i,j), npolar_totalcloud_frac (i,j), npolar_transcloud_frac (i,j), npolar_opaquecloud_frac (i,j), npolar_grnd_detect (i,j)
spolar_cloud_obs_grid (i,j)	3.1, 3.3.1, 3.6	[south] polar total cloud fraction: count of every 25 Hz profile observation in the southern polar region	spolar_lowcloud_frac (i,j), spolar_midcloud_frac (i,j), spolar_highcloud_frac (i,j), spolar_totalcloud_frac (i,j), spolar_transcloud_frac (i,j), spolar_opaquecloud_frac (i,j), spolar_grnd_detect (i,j)
npolar_asr_obs_grid (i,j)	3.5	[north polar] apparent surface reflectance (ASR): count of every 25 Hz profile surface signal detected ASR <i>[apparent_surf_reflec () > 0.0]</i> observation in the northern polar region	npolar_asr (i,j)
spolar_asr_obs_grid (i,j)	3.5	[south polar] apparent surface reflectance (ASR): count of every 25 Hz profile surface signal detected ASR <i>[apparent_surf_reflec () > 0.0]</i> observation in the southern polar region	spolar_asr (i,j)

3.10 Product Statistical Values

For each product gridded parameter for which an image is made, a set of statistical values of the data, consisting of the data minimum, maximum, mean, and standard deviation values, will be displayed on the grid image, and will be written to the atmosphere gridded product. The statistical values will be included on the image in the proximity of the image parameter label, centered below the label. For example, on the global cloud fraction image, a character string sub-label with the format “Min = x.xxxxxx, Max = x.xxxxxx, Mean = x.xxxxxx, StdDev = x.xxxxxx” will be displayed below the image label: “Average Global Cloud Fraction” (centered below the label). The statistical values of the various data product gridded parameters identified in Table 6 are to be written to the product within the quality assessment group. The statistical values contained in the atmosphere gridded product quality_assessment/atmosphere group will be supplied to the image generation code to prepare the image statistical label. [NOTE: example graphics of a typical global (rectangular projection) image and a polar (polar stereographic projection) image with the statistical values label are included as Attachments A-1 and A-2 at the end of this ATBD.]

4.0 Smoothing of Images

For Version 2.0 of this ATBD, two control parameters are introduced, called *smooth_grid* and *center_weight*. If the control parameter *smooth_grid* is equal to 1, then it means to apply the smoothing algorithm below to either the weekly product (ATL16) images, or the monthly product (ATL17) images, based on the product being generated by the PGE. NOTE that the smoothing algorithm is to be applied only to the data to produce the images and not to the gridded data fields that are written to the products. The nominal [default] value of *smooth_grid* is 1. The *center_weight* control parameter is a real value from 0.0 to 1.0 with a nominal [default] value of 0.6. NOTE that the *center_weight* control parameter is not active when image smoothing is deselected (overridden with *smooth_grid* = 0). These control parameter values are installed in the program code as constants [defaults], and may be replaced by override statements included in the execution processing control file. The algorithm below shall be used in the smoothing of the gridded data fields.

Smoothing shall be applied in the following manner. Let *imax* be the number of longitude points in a given grid and *jmax* the number of latitude points. Let the addressing indices go from 1 to *imax* (i.e., not 0 to *imax*-1) and let *Grid* represent a gridded data parameter. The source gridded data may contain INVALID data.

NOTES: the smoothing algorithm code below is to be functionally implemented in the source code for the graphics image production for the ATL16/ATL17 products. If the smoothing algorithm for images is specified, the product parameter grid array data is smoothed locally within the imaging code using internal buffered data– and the source gridded parameter data in the product is not modified.

model code represents the logic for implementing the atmosphere gridded image data smoothing algorithm

```
smooth_grid(*,*) = INVALID

for j= 2, jmax-1 do begin
  for i= 2, imax-1 do begin
    cnt = 0.0
    sum = 0.0
    for ii= i-1, i+1 do begin
      for jj= j-1, j+1 do begin
        if (jj ne j or ii ne i) then begin
          if (grid (ii,jj) ne INVALID) then begin
            cnt++
            sum = sum + Grid (ii,jj)          endif
          endif
        endif
      endfor
    endfor

    avg = 0.0
    if (cnt gt 0.0) then avg = sum / cnt
    pix = 0.0
    weight = 0.0
    if (grid (i,j) ne INVALID) then begin
      weight = center_weight
      pix = Grid (i,j)*weight
    endif
    spix = avg * (1.0 - weight) + pix
    if (spix ne 0.0) then smooth_grid (i,j) = spix
  endfor
endfor

for i= 1, imax do begin
  if (Grid (i,1) ne INVALID and Grid (i,2) ne INVALID) then &
    smooth_grid (i,1) = (Grid (i,1) + Grid (i,2)) / 2.0
  if (Grid (i,jmax-1) ne INVALID and Grid (i,jmax) ne INVALID) then &
    smooth_grid (i,jmax) = (Grid (i,jmax-1) + Grid (i,jmax)) / 2.0
endfor

for j= 1, jmax do begin
  if (Grid (1,j) ne INVALID and Grid (2,j) ne INVALID) then &
    smooth_grid (1,j) = (Grid (1,j) + Grid (2,j)) / 2.0
  if (Grid (imax,j) ne INVALID and Grid (imax-1,j) ne INVALID) then &
    smooth_grid (imax,j) = (Grid (imax-1,j) + Grid (imax,j)) / 2.0
endfor
```

5.0 Product Formats

As mentioned in Section 1.0, ATL16 and ATL17 contain the same atmosphere gridded variables. The only difference between the products is the resolution of the grids, the resolution of the linear latitude and longitude arrays, and the frequency that they will be produced. Tables 2 and 3, also in Section 1.0, provide the global and polar grid sizes and the linear array sizes for the weekly-produced ATL16 and the monthly-produced ATL17 atmosphere gridded products represented in Table 5. Table 6 lists the added Section 3.10 product statistical values as a separate table. The statistical parameters are common to both the ATL16 and ATL17 products.

It is noted for the product images listed in Table 5 that the Description column contains the actual labels to be applied to the embedded graphic for each imaged parameter.

Table 5. Gridded Products List of Gridded and Linear Parameters, Ancillary Data, and Images

Group: /					
Parameter	Type	ATL16 Dim.	ATL17 Dim.	Units	Description
<i>start_time</i>	double precision	(1)	(1)	seconds since 2018-01-01	start time/date of data used to make product
<i>end_time</i>	double precision	(1)	(1)	seconds since 2018-01-01	end time/date of data used to make product
<i>data_qa_flag</i>	integer	(1)	(1)		TBD
<i>npolar_grid_lat</i>	float	(30)	(60)	degrees	latitudes of north polar grid
<i>spolar_grid_lat</i>	float	(30)	(60)	degrees	latitudes of south polar grid
<i>npolar_grid_lon</i>	float	(120)	(240)	degrees	longitudes of north polar grid
<i>spolar_grid_lon</i>	float	(120)	(240)	degrees	longitudes of south polar grid
<i>global_grid_lat</i>	float	(60)	(180)	degrees	latitudes of global grid
<i>global_grid_lon</i>	float	(120)	(360)	degrees	longitudes of global grid
<i>npolar_lorate_bsnow_obs_grid</i>	float	(120,30)	(240,60)	N/A	the number of low-rate blowing snow confidence observations used in the computation of low-rate blowing snow frequency for the Arctic
<i>spolar_lorate_bsnow_obs_grid</i>	float	(120,30)	(240,60)	N/A	the number of low-rate blowing snow confidence observations used in the computation of low-rate blowing snow frequency for the Antarctic
<i>npolar_hirate_bsnow_obs_grid</i>	float	(120,30)	(240,60)	N/A	the number of high-rate blowing snow confidence observations used in the computation of high-rate blowing snow frequency for the Arctic
<i>spolar_hirate_bsnow_obs_grid</i>	float	(120,30)	(240,60)	N/A	the number of high-rate blowing snow confidence observations used in the computation of high-rate blowing snow frequency for the Antarctic

Group: /					
Parameter	Type	ATL16 Dim.	ATL17 Dim.	Units	Description
global_asr_obs_grid	float	(120,60)	(360,180)	N/A	the number of observations used to compute the average global apparent surface reflectance (ASR)
tcod_obs_grid	float	(120,60)	(360,180)	N/A	the number of observations used to compute the average global total column optical depth over water
exp_tcod_obs_grid	float	(120,60)	(360,180)	N/A	the number of observations used to compute the average expanded global total column optical depth over water
global_cloud_aerosol_obs_grid	float	(120,60)	(360,180)	N/A	the number of total observations available to compute the global cloud fraction and the global aerosol fraction
global_cloud_frac	float	(120,60)	(360,180)	fraction	global cloud fraction
combined_global_cloud_frac	float	(120,60)	(360,180)	fraction	<i>combined</i> global cloud fraction
global_aerosol_frac	float	(120,60)	(360,180)	fraction	global aerosol fraction
global_clear_frac	float	(120,60)	(360,180)	fraction	global clear fraction
global_column_od	float	(120,60)	(360,180)	unitless	global (over water) total column optical depth
expanded_global_column_od	float	(120,60)	(360,180)	unitless	expanded global (over water) total column optical depth
npolar_lowcloud_frac	float	(120,30)	(240,60)	fraction	north polar low (<= 4 km) cloud fraction
spolar_lowcloud_frac	float	(120,30)	(240,60)	fraction	south polar low (<= 4 km) cloud fraction
npolar_midcloud_frac	float	(120,30)	(240,60)	fraction	north polar mid (> 4 km and <= 8 km) cloud fraction
spolar_midcloud_frac	float	(120,30)	(240,60)	fraction	south polar mid (> 4 km and <= 8 km) cloud fraction
npolar_highcloud_frac	float	(120,30)	(240,60)	fraction	north polar high (> 8 km) cloud fraction
spolar_highcloud_frac	float	(120,30)	(240,60)	fraction	south polar high (> 8 km) cloud fraction
npolar_totalcloud_frac	float	(120,30)	(240,60)	fraction	north polar total cloud fraction
spolar_totalcloud_frac	float	(120,30)	(240,60)	fraction	south polar total cloud fraction

Group: /					
Parameter	Type	ATL16 Dim.	ATL17 Dim.	Units	Description
npolar_transcloud_frac	float	(120,30)	(240,60)	fraction	north polar transmissive cloud fraction
spolar_transcloud_frac	float	(120,30)	(240,60)	fraction	south polar transmissive cloud fraction
npolar_opaquecloud_frac	float	(120,30)	(240,60)	fraction	north polar opaque cloud fraction
spolar_opaquecloud_frac	float	(120,30)	(240,60)	fraction	south polar opaque cloud fraction
npolar_lorate_blowing_snow_freq	float	(120,30)	(240,60)	percent	low-rate blowing snow frequency for the northern hemisphere polar region
spolar_lorate_blowing_snow_freq	float	(120,30)	(240,60)	percent	low-rate blowing snow frequency for the southern hemisphere polar region
npolar_hirate_blowing_snow_freq	float	(120,30)	(240,60)	percent	high-rate blowing snow frequency for the northern hemisphere polar region
spolar_hirate_blowing_snow_freq	float	(120,30)	(240,60)	percent	high-rate blowing snow frequency for the southern hemisphere polar region
npolar_asr	float	(120,30)	(240,60)	0 - 1	north polar apparent surface reflectance
spolar_asr	float	(120,30)	(240,60)	0 - 1	south polar apparent surface reflectance
global_asr	float	(120,60)	(360,180)	0 - 1	global apparent surface reflectance
npolar_grnd_detect	float	(120,30)	(240,60)	fraction	north polar ground detection frequency
spolar_grnd_detect	float	(120,30)	(240,60)	fraction	south polar ground detection frequency
global_grnd_detect	float	(120,60)	(360,180)	fraction	global ground detection frequency
npolar_totalcloud_frac_img	image			fraction	North Polar Total Cloud Fraction
spolar_totalcloud_frac_img	image			fraction	South Polar Total Cloud Fraction
global_cloud_frac_img	image			fraction	Global Cloud Fraction
combined_global_cloud_frac_img	image			fraction	Combined Global Cloud Fraction
global_clear_frac_img	image			fraction	Global Clear Fraction
global_column_od_img	image			0 - 1.5	Global (Over Water) Total Column Optical Depth (0-1.5)

Group: /					
Parameter	Type	ATL16 Dim.	ATL17 Dim.	Units	Description
expanded_global_column_od_img	image			0 - 25 [1]	Expanded Global (Over Water) Total Column Optical Depth (0-25) [1],[2]
npolar_grnd_detect_img	image			fraction	North Polar Ground Detection Frequency (fraction)
spolar_grnd_detect_img	image			fraction	South Polar Ground Detection Frequency (fraction)
npolar_lorate_blowing_snow_freq_img	image			percent	North Polar Low-Rate Blowing Snow Frequency (percent)
spolar_lorate_blowing_snow_freq_img	image			percent	South Polar Low-Rate Blowing Snow Frequency (percent)
npolar_hirate_blowing_snow_freq_img	image			percent	North Polar High-Rate Blowing Snow Frequency (percent)
spolar_hirate_blowing_snow_freq_img	image			percent	South Polar High-Rate Blowing Snow Frequency (percent)
npolar_asr_img	image			0 - 1	North Polar Apparent Surface Reflectance (0-1)
spolar_asr_img	image			0 - 1	South Polar Apparent Surface Reflectance (0-1)
global_asr_img	image			0 - 1	Global Apparent Surface Reflectance (0-1)
global_aerosol_frac_img	image			fraction	Global Aerosol Fraction
npolar_lowcloud_frac_img	image			fraction	North Polar Low Cloud Fraction (<= 4km)
spolar_lowcloud_frac_img	image			fraction	South Polar Low Cloud Fraction (<= 4km)
npolar_midcloud_frac_img	image			fraction	North Polar Mid Cloud Fraction (> 4km and <= 8km)
spolar_midcloud_frac_img	image			fraction	South Polar Mid Cloud Fraction (> 4km and <= 8km)
npolar_highcloud_frac_img	image			fraction	North Polar High Cloud Fraction (> 8km)
spolar_highcloud_frac_img	image			fraction	South Polar High Cloud Fraction (> 8km)
npolar_transcloud_frac_img	image			fraction	North Polar Transmissive Cloud Fraction

Group: /					
Parameter	Type	ATL16 Dim.	ATL17 Dim.	Units	Description
<i>spolar_transcloud_frac_img</i>	image			fraction	South Polar Transmissive Cloud Fraction
<i>npolar_opaquecloud_frac_img</i>	image			fraction	North Polar Opaque Cloud Fraction
<i>spolar_opaquecloud_frac_img</i>	image			fraction	South Polar Opaque Cloud Fraction
<i>global_grnd_detect_img</i>	image			fraction	Global Ground Detection Frequency (fraction)

NOTE: for the images the Description field contains the label for the projection graphic.

NOTES: [1] Expanded Global (Over Water) Total Column Optical Depth (0-25) upper range constraint is subject to change. [2] the control parameter *gen_cloud_od_max* is to be displayed on the image.

Table 6. Gridded Products List of Ancillary Control Data

Group: /ancillary_data/atmosphere					
Parameter	Type	ATL16 Dim.	ATL17 Dim.	Units	Description
<i>data_type_flag</i>	integer	(1)	(1)	0, 1	tells whether night only data was used to make product. 0=no, 1=yes [default = 0]
<i>polar_grid_lon_scale</i>	float	(1)	(1)	degrees	polar grid projection cell longitude resolution (size) [defaults: ATL16 = 3.0, ATL17 = 1.5]
<i>polar_grid_lat_scale</i>	float	(1)	(1)	degrees	polar grid projection cell latitude resolution (size) [defaults: ATL16 = 1.0, ATL17 = 0.5]
<i>global_grid_lon_scale</i>	float	(1)	(1)	degrees	global grid projection cell longitude resolution (size) [defaults: ATL16 = 3.0, ATL17 = 1.0]
<i>global_grid_lat_scale</i>	float	(1)	(1)	degrees	global grid projection cell latitude resolution (size) [defaults: ATL16 = 3.0, ATL17 = 1.0]
<i>obs_minimum</i>	integer	(1)	(1)	N/A	minimum acceptable selected observation count from control constant [defaults: ATL16 = 2, ATL17 = 4]
<i>smooth_grid</i>	integer	(1)	(1)	0, 1	use smoothed grid data to generate parameter grid images: 0=generate images without smoothing, 1=generate images with smoothing applied [default = 1]
<i>center_weight</i>	float	(1)	(1)	N/A	weight factor used to scale each cell in the smoothed image production [default = 0.6]

Group: /ancillary_data/atmosphere					
Parameter	Type	ATL16 Dim.	ATL17 Dim.	Units	Description
<i>asr_cloud_threshold</i>	integer	(1)	(1)	N/A	when generating <i>combined_global_cloud_frac</i> , <i>asr_cloud_probability ()</i> will be used to increase the cloud count when it meets or exceeds <i>asr_cloud_threshold</i> , that is the minimum value to increment the cloud counter grid box, nominal value = 80 [default = 80]
<i>gen_cloud_od_max</i>	integer	(1)	(1)	N/A	for the expanded global total column optical depth over water, when calculating a estimated value to replace INVALID <i>column_od_asr ()</i> over water profile values, the parameter <i>gen_cloud_od_max</i> provides the maximum value, i.e., the ranging upper limit, for the calculation; the nominal value is 35 [default = 35]

NOTES: The values indicated in this document are listed as control defaults above; execution overrides are provided for replacement of these control parameters within the production environment. The parameters "*global_grid_lon_scale*" and "*polar_grid_lon_scale*" now replace the Version 2 ATL16/ATL17 parameter "*lon_scale*". Similarly, the parameters "*global_grid_lat_scale*" and "*polar_grid_lat_scale*" now replace the Version 2 ATL16/ATL17 parameter "*lat_scale*".

Table 7. Gridded Products List of Statistical Parameters

Group: /quality_assessment/atmosphere			
Parameter	Type	Units	Description
<i>global_cloud_frac_min</i>	float	fraction	global cloud fraction minimum
<i>global_cloud_frac_max</i>	float	fraction	global cloud fraction maximum
<i>global_cloud_frac_mean</i>	float	fraction	global cloud fraction mean
<i>global_cloud_frac_sdev</i>	float	fraction	global cloud fraction standard deviation
<i>combined_global_cloud_frac_min</i>	float	fraction	combined global cloud fraction minimum
<i>combined_global_cloud_frac_max</i>	float	fraction	combined global cloud fraction maximum
<i>combined_global_cloud_frac_mean</i>	float	fraction	combined global cloud fraction mean
<i>combined_global_cloud_frac_sdev</i>	float	fraction	combined global cloud fraction standard deviation
<i>global_aerosol_frac_min</i>	float	fraction	global aerosol fraction minimum
<i>global_aerosol_frac_max</i>	float	fraction	global aerosol fraction maximum
<i>global_aerosol_frac_mean</i>	float	fraction	global aerosol fraction mean
<i>global_aerosol_frac_sdev</i>	float	fraction	global aerosol fraction standard deviation
<i>global_clear_frac_min</i>	float	fraction	global clear fraction minimum
<i>global_clear_frac_max</i>	float	fraction	global clear fraction maximum
<i>global_clear_frac_mean</i>	float	fraction	global clear fraction mean
<i>global_clear_frac_sdev</i>	float	fraction	global clear fraction standard deviation
<i>global_column_od_min</i>	float	unitless	global (over water) total column optical depth minimum
<i>global_column_od_max</i>	float	unitless	global (over water) total column optical depth maximum
<i>global_column_od_mean</i>	float	unitless	global (over water) total column optical depth mean
<i>global_column_od_sdev</i>	float	unitless	global (over water) total column optical depth standard deviation
<i>expanded_global_column_od_min</i>	float	unitless	expanded global (over water) total column optical depth minimum
<i>expanded_global_column_od_max</i>	float	unitless	expanded global (over water) total column optical depth maximum
<i>expanded_global_column_od_mean</i>	float	unitless	expanded global (over water) total column optical depth mean
<i>expanded_global_column_od_sdev</i>	float	unitless	expanded global (over water) total column optical depth standard deviation
<i>npolar_lowcloud_frac_min</i>	float	fraction	north polar low (<= 4 km) cloud fraction minimum
<i>npolar_lowcloud_frac_max</i>	float	fraction	north polar low (<= 4 km) cloud fraction maximum

Group: /quality_assessment/atmosphere			
Parameter	Type	Units	Description
<i>npolar_lowcloud_frac_mean</i>	float	fraction	north polar low (<= 4 km) cloud fraction mean
<i>npolar_lowcloud_frac_sdev</i>	float	fraction	north polar low (<= 4 km) cloud fraction standard deviation
<i>spolar_lowcloud_frac_min</i>	float	fraction	south polar low (<= 4 km) cloud fraction minimum
<i>spolar_lowcloud_frac_max</i>	float	fraction	south polar low (<= 4 km) cloud fraction maximum
<i>spolar_lowcloud_frac_mean</i>	float	fraction	south polar low (<= 4 km) cloud fraction mean
<i>spolar_lowcloud_frac_sdev</i>	float	fraction	south polar low (<= 4 km) cloud fraction standard deviation
<i>npolar_midcloud_frac_min</i>	float	fraction	north polar mid (> 4 km and <= 8 km) cloud fraction minimum
<i>npolar_midcloud_frac_max</i>	float	fraction	north polar mid (> 4 km and <= 8 km) cloud fraction maximum
<i>npolar_midcloud_frac_mean</i>	float	fraction	north polar mid (> 4 km and <= 8 km) cloud fraction mean
<i>npolar_midcloud_frac_sdev</i>	float	fraction	north polar mid (> 4 km and <= 8 km) cloud fraction standard deviation
<i>spolar_midcloud_frac_min</i>	float	fraction	south polar mid (> 4 km and <= 8 km) cloud fraction minimum
<i>spolar_midcloud_frac_max</i>	float	fraction	south polar mid (> 4 km and <= 8 km) cloud fraction maximum
<i>spolar_midcloud_frac_mean</i>	float	fraction	south polar mid (> 4 km and <= 8 km) cloud fraction mean
<i>spolar_midcloud_frac_sdev</i>	float	fraction	south polar mid (> 4 km and <= 8 km) cloud fraction standard deviation
<i>npolar_highcloud_frac_min</i>	float	fraction	north polar high (> 8 km) cloud fraction minimum
<i>npolar_highcloud_frac_max</i>	float	fraction	north polar high (> 8 km) cloud fraction maximum
<i>npolar_highcloud_frac_mean</i>	float	fraction	north polar high (> 8 km) cloud fraction mean
<i>npolar_highcloud_frac_sdev</i>	float	fraction	north polar high (> 8 km) cloud fraction standard deviation
<i>spolar_highcloud_frac_min</i>	float	fraction	south polar high (> 8 km) cloud fraction minimum
<i>spolar_highcloud_frac_max</i>	float	fraction	south polar high (> 8 km) cloud fraction maximum
<i>spolar_highcloud_frac_mean</i>	float	fraction	south polar high (> 8 km) cloud fraction mean

Group: /quality_assessment/atmosphere			
Parameter	Type	Units	Description
<i>spolar_highcloud_frac_sdev</i>	float	fraction	south polar high (> 8 km) cloud fraction standard deviation
<i>npolar_totalcloud_frac_min</i>	float	fraction	north polar total cloud fraction minimum
<i>npolar_totalcloud_frac_max</i>	float	fraction	north polar total cloud fraction maximum
<i>npolar_totalcloud_frac_mean</i>	float	fraction	north polar total cloud fraction mean
<i>npolar_totalcloud_frac_sdev</i>	float	fraction	north polar total cloud fraction standard deviation
<i>spolar_totalcloud_frac_min</i>	float	fraction	south polar total cloud fraction minimum
<i>spolar_totalcloud_frac_max</i>	float	fraction	south polar total cloud fraction maximum
<i>spolar_totalcloud_frac_mean</i>	float	fraction	south polar total cloud fraction mean
<i>spolar_totalcloud_frac_sdev</i>	float	fraction	south polar total cloud fraction standard deviation
<i>npolar_transcloud_frac_min</i>	float	fraction	north polar transmissive cloud fraction minimum
<i>npolar_transcloud_frac_max</i>	float	fraction	north polar transmissive cloud fraction maximum
<i>npolar_transcloud_frac_mean</i>	float	fraction	north polar transmissive cloud fraction mean
<i>npolar_transcloud_frac_sdev</i>	float	fraction	north polar transmissive cloud fraction standard deviation
<i>spolar_transcloud_frac_min</i>	float	fraction	south polar transmissive cloud fraction minimum
<i>spolar_transcloud_frac_max</i>	float	fraction	south polar transmissive cloud fraction maximum
<i>spolar_transcloud_frac_mean</i>	float	fraction	south polar transmissive cloud fraction mean
<i>spolar_transcloud_frac_sdev</i>	float	fraction	south polar transmissive cloud fraction standard deviation
<i>npolar_opaquecloud_frac_min</i>	float	fraction	north polar opaque cloud fraction minimum
<i>npolar_opaquecloud_frac_max</i>	float	fraction	north polar opaque cloud fraction maximum
<i>npolar_opaquecloud_frac_mean</i>	float	fraction	north polar opaque cloud fraction mean
<i>npolar_opaquecloud_frac_sdev</i>	float	fraction	north polar opaque cloud fraction standard deviation
<i>spolar_opaquecloud_frac_min</i>	float	fraction	south polar opaque cloud fraction minimum
<i>spolar_opaquecloud_frac_max</i>	float	fraction	south polar opaque cloud fraction maximum

Group: /quality_assessment/atmosphere			
Parameter	Type	Units	Description
<i>spolar_opaquecloud_frac_mean</i>	float	fraction	south polar opaque cloud fraction mean
<i>spolar_opaquecloud_frac_sdev</i>	float	fraction	south polar opaque cloud fraction standard deviation
<i>npolar_lorate_blowing_snow_freq_min</i>	float	percent	low-rate blowing snow frequency for the northern hemisphere polar region minimum
<i>npolar_lorate_blowing_snow_freq_max</i>	float	percent	low-rate blowing snow frequency for the northern hemisphere polar region maximum
<i>npolar_lorate_blowing_snow_freq_mean</i>	float	percent	low-rate blowing snow frequency for the northern hemisphere polar region mean
<i>npolar_lorate_blowing_snow_freq_sdev</i>	float	percent	low-rate blowing snow frequency for the northern hemisphere polar region standard deviation
<i>spolar_lorate_blowing_snow_freq_min</i>	float	percent	low-rate blowing snow frequency for the southern hemisphere polar region minimum
<i>spolar_lorate_blowing_snow_freq_max</i>	float	percent	low-rate blowing snow frequency for the southern hemisphere polar region maximum
<i>spolar_lorate_blowing_snow_freq_mean</i>	float	percent	low-rate blowing snow frequency for the southern hemisphere polar region mean
<i>spolar_lorate_blowing_snow_freq_sdev</i>	float	percent	low-rate blowing snow frequency for the southern hemisphere polar region standard deviation
<i>npolar_hirate_blowing_snow_freq_min</i>	float	percent	high-rate blowing snow frequency for the northern hemisphere polar region minimum
<i>npolar_hirate_blowing_snow_freq_max</i>	float	percent	high-rate blowing snow frequency for the northern hemisphere polar region maximum
<i>npolar_hirate_blowing_snow_freq_mean</i>	float	percent	high-rate blowing snow frequency for the northern hemisphere polar region mean
<i>npolar_hirate_blowing_snow_freq_sdev</i>	float	percent	high-rate blowing snow frequency for the northern hemisphere polar region standard deviation
<i>spolar_hirate_blowing_snow_freq_min</i>	float	percent	high-rate blowing snow frequency for the southern hemisphere polar region minimum

Group: /quality_assessment/atmosphere			
Parameter	Type	Units	Description
<i>spolar_hirate_blowing_snow_freq_max</i>	float	percent	high-rate blowing snow frequency for the southern hemisphere polar region maximum
<i>spolar_hirate_blowing_snow_freq_mean</i>	float	percent	high-rate blowing snow frequency for the southern hemisphere polar region mean
<i>spolar_hirate_blowing_snow_freq_sdev</i>	float	percent	high-rate blowing snow frequency for the southern hemisphere polar region standard deviation
<i>npolar_asr_min</i>	float	0 - 1	north polar apparent surface reflectance minimum
<i>npolar_asr_max</i>	float	0 - 1	north polar apparent surface reflectance maximum
<i>npolar_asr_mean</i>	float	0 - 1	north polar apparent surface reflectance mean
<i>npolar_asr_sdev</i>	float	0 - 1	north polar apparent surface reflectance standard deviation
<i>spolar_asr_min</i>	float	0 - 1	south polar apparent surface reflectance minimum
<i>spolar_asr_max</i>	float	0 - 1	south polar apparent surface reflectance maximum
<i>spolar_asr_mean</i>	float	0 - 1	south polar apparent surface reflectance mean
<i>spolar_asr_sdev</i>	float	0 - 1	south polar apparent surface reflectance standard deviation
<i>global_asr_min</i>	float	0 - 1	global apparent surface reflectance minimum
<i>global_asr_max</i>	float	0 - 1	global apparent surface reflectance maximum
<i>global_asr_mean</i>	float	0 - 1	global apparent surface reflectance mean
<i>global_asr_sdev</i>	float	0 - 1	global apparent surface reflectance standard deviation
<i>npolar_grnd_detect_min</i>	float	fraction	north polar ground detection frequency minimum
<i>npolar_grnd_detect_max</i>	float	fraction	north polar ground detection frequency maximum
<i>npolar_grnd_detect_mean</i>	float	fraction	north polar ground detection frequency mean
<i>npolar_grnd_detect_sdev</i>	float	fraction	north polar ground detection frequency standard deviation
<i>spolar_grnd_detect_min</i>	float	fraction	south polar ground detection frequency minimum

Group: /quality_assessment/atmosphere			
Parameter	Type	Units	Description
<i>spolar_grnd_detect_max</i>	float	fraction	south polar ground detection frequency maximum
<i>spolar_grnd_detect_mean</i>	float	fraction	south polar ground detection frequency mean
<i>spolar_grnd_detect_sdev</i>	float	fraction	south polar ground detection frequency standard deviation
<i>global_grnd_detect_min</i>	float	fraction	global ground detection frequency minimum
<i>global_grnd_detect_max</i>	float	fraction	global ground detection frequency maximum
<i>global_grnd_detect_mean</i>	float	fraction	global ground detection frequency mean
<i>global_grnd_detect_sdev</i>	float	fraction	global ground detection frequency standard deviation

NOTE: the atmosphere gridded parameters statistical data will be located within the product “/quality_assessment/atmosphere” group.

Table 8. List of Input Parameters from the ATL09 Level-3A Calibrated Backscatter Profile and Atmospheric Layer Characteristics Data

Group: /ancillary_data			
Parameter	Type	Units	Long Name / Description
<i>end_delta_time</i>	double	seconds since 2018-01-01	ATLAS End Time (Actual) / Number of GPS seconds since the ATLAS SDP epoch at the last data point in the file. The ATLAS Standard Data Products (SDP) epoch offset is defined within /ancillary_data/atlas_sdp_gps_epoch as the number of GPS seconds between the GPS epoch (1980-01-06T00:00:00.000000Z UTC) and the ATLAS SDP epoch. By adding the offset contained within atlas_sdp_gps_epoch to delta time parameters, the time in gps_seconds relative to the GPS epoch can be computed.
<i>start_delta_time</i>	double	seconds since 2018-01-01	ATLAS Start Time (Actual) / Number of GPS seconds since the ATLAS SDP epoch at the first data point in the file. The ATLAS Standard Data Products (SDP) epoch offset is defined within /ancillary_data/atlas_sdp_gps_epoch as the number of GPS seconds between the GPS epoch (1980-01-06T00:00:00.000000Z UTC) and the ATLAS SDP epoch. By adding the offset contained within atlas_sdp_gps_epoch to delta time parameters, the time in gps_seconds relative to the GPS epoch can be computed.

Group: /profile_x/high_rate			
Parameter	Type	Units	Long Name / Description
<i>apparent_surf_reflec ()</i>	float	1	Apparent Surface Reflectance / Apparent Surface Reflectance (ASR). Atmosphere ATBD (Eqn 4.7).
<i>asr_cloud_probability ()</i>	float	1	ASR Cloud Probability / Probability of the occurrence of cloud based on the magnitude of the apparent surface reflectivity. Atmosphere ATBD, part 1 (section 4.6.2.3)
<i>bsnow_con ()</i>	integer _1	1	Blowing Snow Confidence / Blowing snow confidence. -3=surface not detected; -2=no surface wind; -1=no scattering layer found; 0=no top layer found; 1=none-little; 2=weak; 3=moderate; 4=moderate-high; 5=high; 6=very high. Atmosphere ATBD. Meanings: [-3 -2 -1 0 1 2 3 4 5 6]) (Values: ['surface_not_detected', 'no_surface_wind', 'no_scattering_layer_found', 'no_top_layer_found', 'none_little', 'weak', 'moderate', 'moderate_high', 'high', 'very_high']).

Group: /profile_x/high_rate			
Parameter	Type	Units	Long Name / Description
<i>bsnow_h ()</i>	float	meters	Blowing Snow Layer Thickness / Blowing Snow layer thickness (height of top above surface). Atmosphere ATBD.
<i>cloud_flag_atm ()</i>	integer _1	1	Cloud Flag Atm / Number of layers found from the backscatter profile using the DDA layer finder. Atmosphere ATBD.
<i>column_od_asr ()</i>	float	1	Optical Depth from ASR / Optical depth of atmosphere column based on apparent surface reflectance and the assumed actual surface reflectance. Atmosphere ATBD.
<i>column_od_asr_qf ()</i>	integer _1	1	Optical Depth ASR Quality / Total column optical depth from ASR quality flag. The total atmosphere column particulate optical depth can be computed from the apparent surface reflectance if the actual surface reflectance is well known. The flag indicates the surface type over which the flag is computed in the order from unable to compute (0 - no_surface_signal) to best quality (4=water). Atmosphere ATBD. (Meanings: [0 1 2 3 4]) (Values: ['no_signal', 'land', 'sea_ice', 'land_ice', 'water']).
<i>delta_time ()</i>	double	seconds since 2018-01-01	Elapsed GPS Seconds / Number of GPS seconds since the ATLAS SDP epoch. The ATLAS Standard Data Products (SDP) epoch offset is defined within /ancillary_data/atlas_sdp_gps_epoch as the number of GPS seconds between the GPS epoch (1980-01-06T00:00:00.000000Z UTC) and the ATLAS SDP epoch. By adding the offset contained within atlas_sdp_gps_epoch to delta time parameters, the time in gps_seconds relative to the GPS epoch can be computed. Atmosphere ATBD.
<i>latitude ()</i>	double	degrees _north	Latitude of the ATM Histogram / Latitude at the top of the ATM histogram, WGS84, North=+, Derived from the geolocation of the ATM range window. ATL03g ATBD.
<i>layer_attr (,)</i>	integer _1	1	Layer Attribute Flag / Layer attribute flag for each of the possible 10 layers. Indicates (0) no_layer (1) cloud, (2) aerosol or (3) unknown. Atmosphere ATBD. (Meanings: [0 1 2 3]) (Values: ['no_layer', 'cloud', 'aerosol', 'unknown']).
<i>layer_top (,)</i>	float	meters	Height Layer Tops / Height of top of detected layers. Atmosphere ATBD.

Group: /profile_x/high_rate			
Parameter	Type	Units	Long Name / Description
<i>longitude ()</i>	double	degrees_east	Longitude of the ATM Histogram / Longitude at the top of the ATM histogram, WGS84, East=+, derived from the geolocation of the ATM range window. Atmosphere ATBD.
<i>segment_id ()</i>	integer	1	Along-Track Segment ID Number / A 7-digit number identifying the along-track geolocation segment number. These are sequential, starting with 1 for the first segment after an ascending equatorial crossing node. ATL03 ATBD (Section 3.1).
<i>solar_elevation ()</i>	float	degrees	Solar Angle above or below the plane tangent to the ellipsoid surface at the laser spot. Positive values mean the sun is above the horizon, while negative values mean it is below the horizon. The effect of atmospheric refraction is not included. This is a low precision value, with approximately TBD degree accuracy. ATL03g ATBD.
<i>surf_type (,)</i>	integer _1	1	Surface Type / Flags describing which surface types this interval is associated with. 0=not type, 1=is type. Order of array is land, ocean, sea ice, land ice, inland water. ATL03 ATBD (Section 4). (Meanings: [0 1]) (Values: ['not_type', 'is_type']).
<i>surface_sig ()</i>	float	counts	Surface Signal Count / Number of photons in the detected surface bin. Atmosphere ATBD (Section 3.3.5).

Group: /profile_x/low_rate			
Parameter	Type	Units	Long Name / Description
<i>bsnow_con ()</i>	integer _1	1	Blowing Snow Confidence / Blowing snow confidence. -3=surface not detected; -2=no surface wind;-1=no scattering layer found; 0=no top layer found; 1=none-little; 2=weak; 3=moderate; 4=moderate-high; 5=high; 6=very high. Atmosphere ATBD. Meanings: [-3 -2 -1 0 1 2 3 4 5 6]) (Values: ['surface_not_detected', 'no_surface_wind', 'no_scattering_layer_found', 'no_top_layer_found', 'none_little', 'weak', 'moderate', 'moderate_high', 'high', 'very_high']).
<i>bsnow_h ()</i>	float	meters	Blowing Snow Layer Thickness / Blowing Snow layer thickness (height of top above surface). Atmosphere ATBD.

Group: /profile_x/low_rate			
Parameter	Type	Units	Long Name / Description
<i>delta_time ()</i>	double	seconds since 2018-01-01	Elapsed GPS Seconds / Number of GPS seconds since the ATLAS SDP epoch. The ATLAS Standard Data Products (SDP) epoch offset is defined within /ancillary_data/atlas_sdp_gps_epoch as the number of GPS seconds between the GPS epoch (1980-01-06T00:00:00.000000Z UTC) and the ATLAS SDP epoch. By adding the offset contained within atlas_sdp_gps_epoch to delta time parameters, the time in gps_seconds relative to the GPS epoch can be computed. Atmosphere ATBD.
<i>latitude ()</i>	double	degrees_north	Latitude of the ATM Histogram / Latitude at the top of the ATM histogram, WGS84, North=+, Derived from the geolocation of the ATM range window. ATLO3g ATBD.
<i>longitude ()</i>	double	degrees_east	Longitude of the ATM Histogram / Longitude at the top of the ATM histogram, WGS84, East=+, derived from the geolocation of the ATM range window. Atmosphere ATBD.

6.0 Product Production Considerations

List of ATBD Lead suggestions regarding the date/time span for production of atmosphere gridded data products:

- the monthly product will begin on the first day of the month;
- the monthly data product will end on the last day of the month;
- the first weekly data product within the month will begin on the first day of the month, end on the seventh day of the month, and contain seven days;
- the second weekly data product within the month will begin on the eighth day of the month, end on the fourteenth day of the month, and contain seven days;
- the third weekly data product within the month will begin on the fifteenth day of the month, end on the twenty-first day of the month, and contain seven days;
- the fourth weekly data product within the month will begin on the twenty-second day of the month, end on either the twenty-eighth, twenty-ninth, thirtieth, or thirty-first day of the month, and will contain either seven days, eight days, nine days, or ten days, respectively, depending on the calendar month and leap year.

The following tables supply the beginning and ending dates for the control file generation for production of monthly ATL17 and weekly ATL16 atmosphere gridded data products.

6.1 ATL17 Monthly Atmosphere Gridded Product Content Control

Monthly ATL17 Product File Content Control Information
 (used to control the collection and specification of ATL09 files to compose the product)

Month	Beginning Date	Ending Date	Number of Days	Possible Number of Files (RGTs)
January	January 01	January 31	31	474
February	February 01	February 28	28	428
February (leap year)	February 01	February 29	29	443
March	March 01	March 31	31	474
April	April 01	April 30	30	459
May	May 01	May 31	31	474
June	June 01	June 30	30	459
July	July 01	July 31	31	474
August	August 01	August 31	31	474
September	September 01	September 30	30	459
October	October 01	October 31	31	474
November	November 01	November 30	30	459
December	December 01	December 31	31	474

Table 9. Monthly ATL17 Data Product ATL09 File Composition by Month

6.2 ATL16 Weekly Atmosphere Gridded Product Content Control

Weekly ATL16 Product File Content Control Information
(used to control the collection and specification of ATL09 files to compose the product)

Month	Week	Beginning Date	Ending Date	Number of Days	Possible Number of Files (RGTs)
January	01	January 01	January 07	07	107
January	02	January 08	January 14	07	107
January	03	January 15	January 21	07	107
January	04	January 22	January 31	10	153
February	01	February 01	February 07	07	107
February	02	February 08	February 14	07	107
February	03	February 15	February 21	07	107
February	04	February 22	February 28	07	107
February (leap year)	04	February 22	February 29	08	123
March	01	March 01	March 07	07	107
March	02	March 08	March 14	07	107
March	03	March 15	March 21	07	107
March	04	March 22	March 31	10	153
April	01	April 01	April 07	07	107
April	02	April 08	April 14	07	107
April	03	April 15	April 21	07	107
April	04	April 22	April 30	09	138
May	01	May 01	May 07	07	107
May	02	May 08	May 14	07	107
May	03	May 15	May 21	07	107
May	04	May 22	May 31	10	153
June	01	June 01	June 07	07	107
June	02	June 08	June 14	07	107
June	03	June 15	June 21	07	107
June	04	June 22	June 30	09	138
July	01	July 01	July 07	07	107
July	02	July 08	July 14	07	107
July	03	July 15	July 21	07	107
July	04	July 22	July 31	10	153
August	01	August 01	August 07	07	107
August	02	August 08	August 14	07	107
August	03	August 15	August 21	07	107
August	04	August 22	August 31	10	153
September	01	September 01	September 07	07	107
September	02	September 08	September 14	07	107
September	03	September 15	September 21	07	107
September	04	September 22	September 30	09	138

Month	Week	Beginning Date	Ending Date	Number of Days	Possible Number of Files (RGTs)
October	01	October 01	October 07	07	107
October	02	October 08	October 14	07	107
October	03	October 15	October 21	07	107
October	04	October 22	October 31	10	153
November	01	November 01	November 07	07	107
November	02	November 08	November 14	07	107
November	03	November 15	November 21	07	107
November	04	November 22	November 30	09	138
December	01	December 01	December 07	07	107
December	02	December 08	December 14	07	107
December	03	December 15	December 21	07	107
December	04	December 22	December 31	10	153

Table 10. Weekly ATL16 Data Product ATL09 File Composition by Month and Week

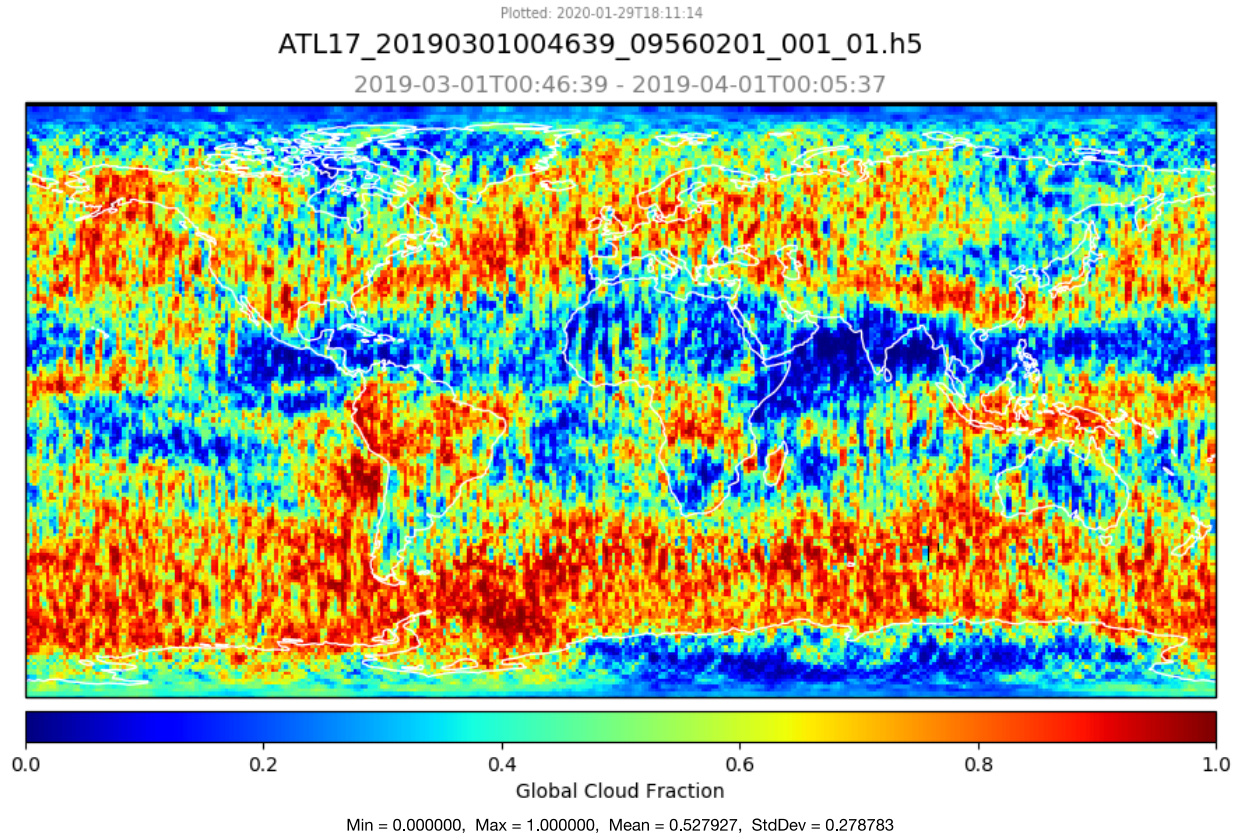
7.0 Acronyms and Abbreviations

Acronym / Abbreviation	Expansion / Definition
ASR	Apparent Surface Reflectance; Apparent Surface Reflectivity
ATBD	Algorithm Theoretical Basis Document
DDA	Density Dimension Algorithm
HDF	Hierarchical Data Format
HDF5	Hierarchical Data Format Version 5
Hz	Hertz
L3A	Level-3A
L3B	Level-3B
N/A	Not Applicable
OD	Optical Depth
PGE	Product Generation Executive
TCOD	Total Column Optical Depth

A.0 Attachments

A.1 Attachment A-1: Exhibit Rectangular Image with Statistical Data Label

Attachment A-1 Exhibit “atlas_plot” Application ATL17 Product Python Code Generated Rectangular Projection Global Parameter Image with Added Grid Statistical Data Sub-Label.



The graphic above presents the rectangular projection image of the Global Cloud Fraction parameter produced by the Python code application “atlas_plot.py” using the ATL16/ATL17 product specific “plot_atl16.py” Python code. The image extracted from the monthly ATL17 atmosphere gridded product for the month of March 2019 has been edited to apply the statistical data label showing the gridded data minimum, maximum, mean, and standard deviation values, positioned as a character text string sub-label

Min = 0.000000, Max = 1.000000, Mean = 0.527927, StdDev = 0.278783

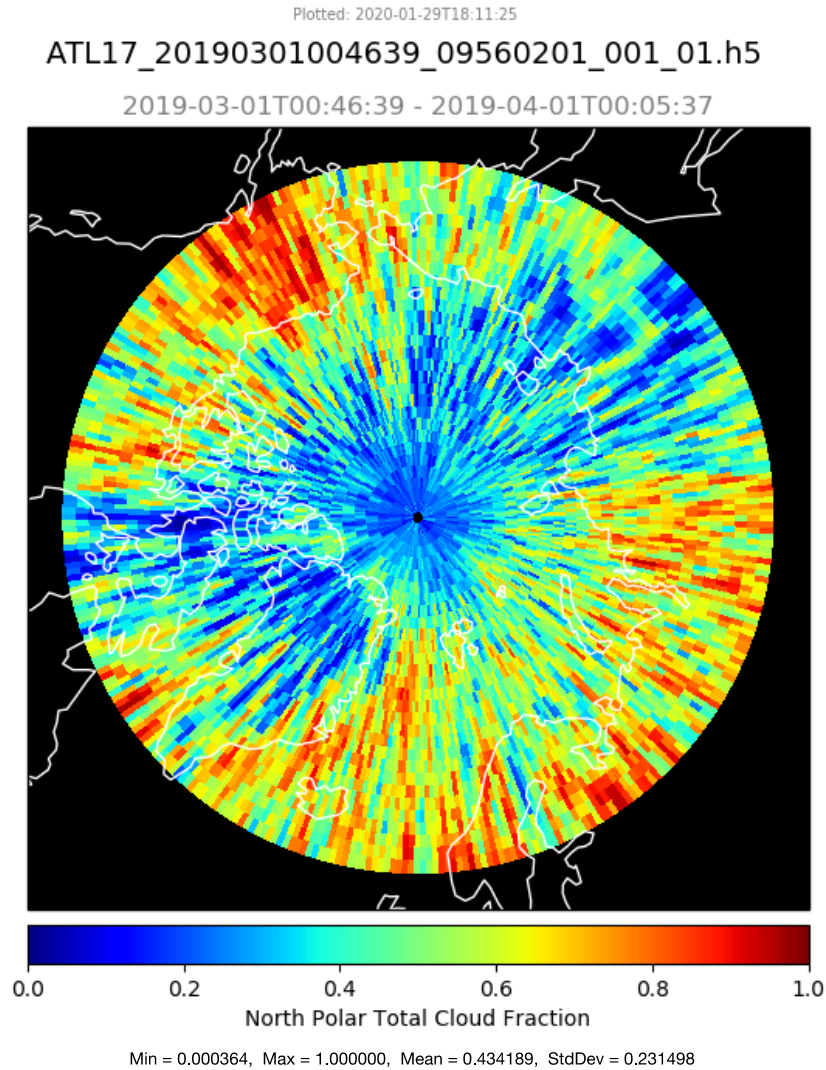
centered below the image parameter label

Global Cloud Fraction

The statistical date values for this example parameter image (and the other global and polar parameter images) will be obtained from the ATL17 product quality assessment data group by the image-generating Python code application. The basis for this image implementation is found in Section 3.10.

A.2 Attachment A-2: Exhibit Polar Image with Statistical Data Label

Attachment A-2 Exhibit “atlas_plot” Application ATL17 Product Python Code Generated Polar Stereographic Projection Polar Parameter Image with Added Grid Statistical Data Sub-Label.



The graphic above presents the polar stereographic projection image of the North Polar Total Cloud Fraction parameter produced by the Python code application “atlas_plot.py” using the ATL16/ATL17 product specific “plot_atl16.py” Python code. The image extracted from the monthly ATL17 atmosphere gridded product for the month of March 2019 has been edited to apply the statistical data label showing the gridded data minimum, maximum, mean, and standard deviation values, positioned as a character text string sub-label

Min = 0.000364, Max = 1.000000, Mean = 0.434189, StdDev = 0.231498

centered below the image parameter label

North Polar Total Cloud Fraction

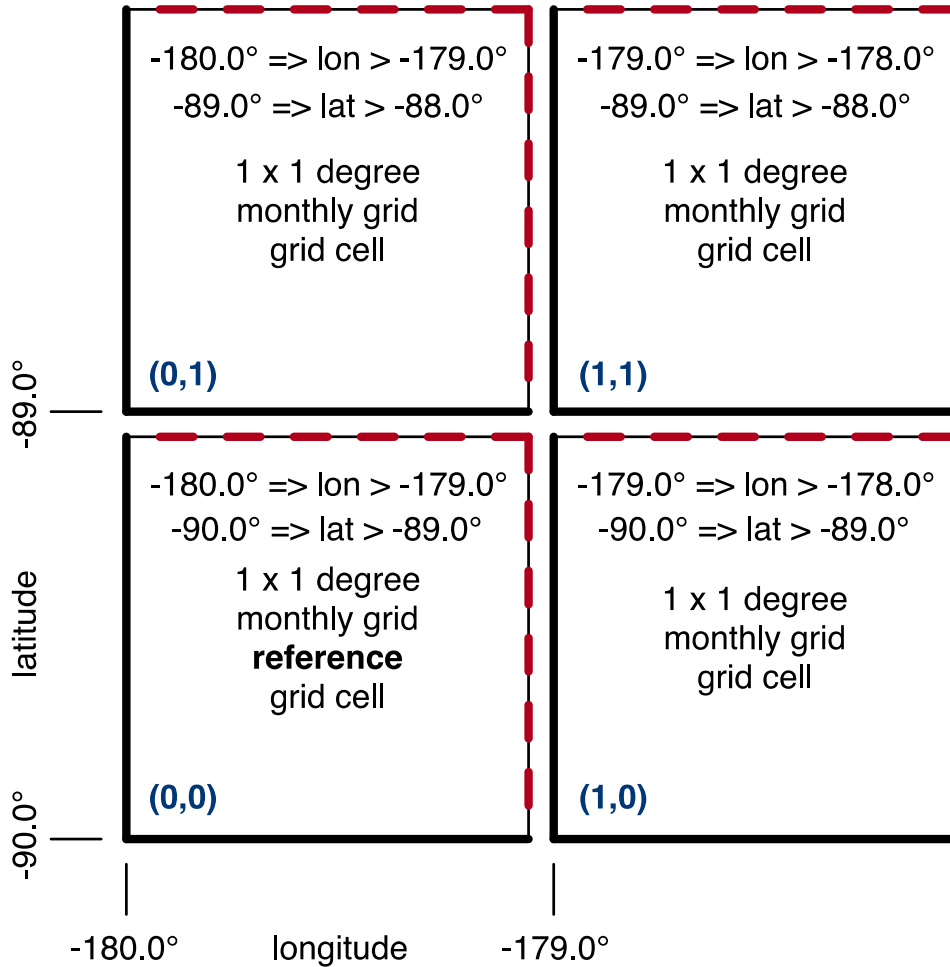
The statistical data values for this example parameter image (and the other global and polar parameter images) will be obtained from the ATL17 product quality assessment data group by the image-generating Python code application. The basis for this image implementation is found in Section 3.10.

NOTE that the above exhibit images are generated with “atlas_l3b_atm” version 1.1 PGE using the monthly polar grid cell size of 1 degree by 1 degree. The Version 1.2 PGE will generate the polar grid projection with a cell size of 1.5 degrees longitude by 0.5 degrees latitude.

A.3 Attachment A-3: Example Global Gridded Parameter Reference Layout

Example Global Gridded Parameter Reference Layout Grid Cell Index Formula Application for Profile Data Gridding

Monthly Global Grid Reference Grid Cell



Global Grid Cell Index: (longitude index, latitude index)

Reference index point: (0,0) = (-180,-90) = the lower left corner

Product: ATL17 – monthly gridded product (global parameters)

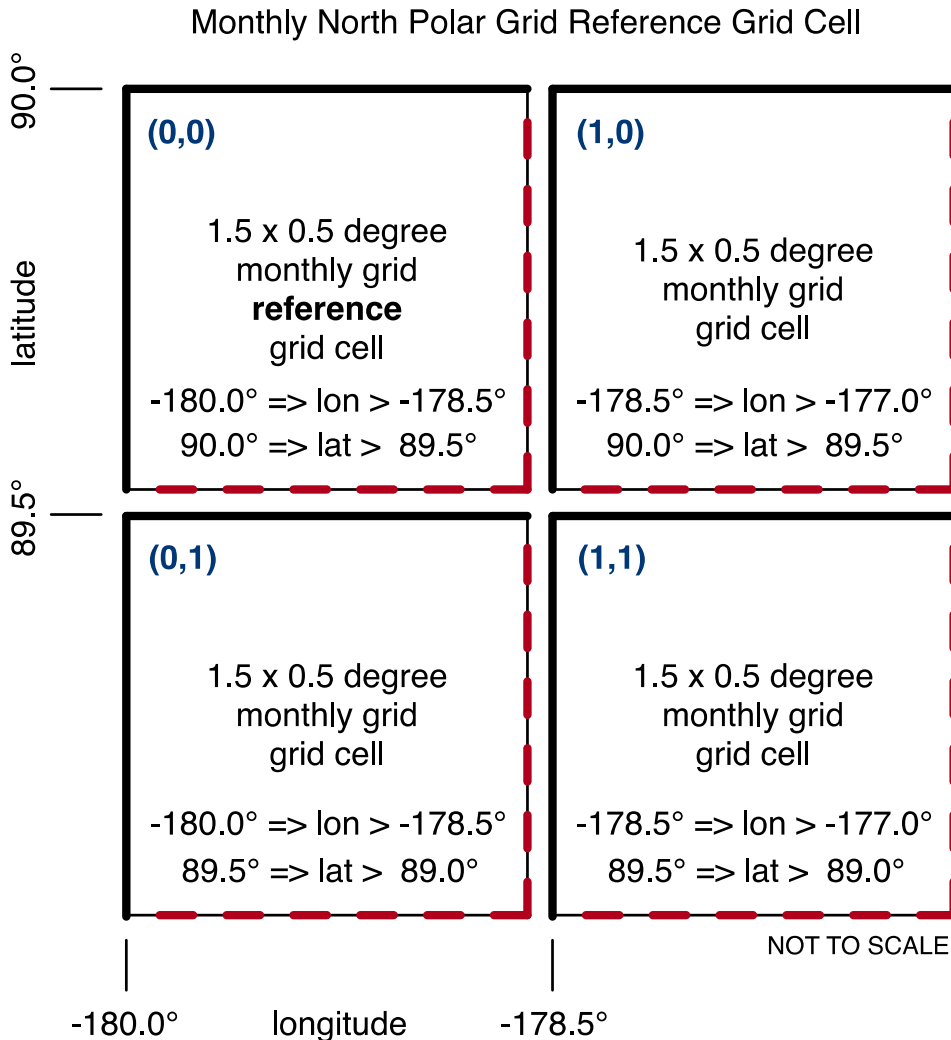
Grid size: global (rectangular projection): 1 degree longitude by 1 degree latitude

Attachment A-3 Graphical Image Illustrating Section 2.0 Global Grid Application and Index Computation for the ATL17 Monthly Gridded Atmosphere Product Parameter.

This graphic provides an example image to depict application of the Section 2.0 Global (rectangular projection) 1-degree longitude by 1-degree latitude grid cell size and indexing formula for the ATL17 monthly product grid cell mapping with open and closed boundaries indicated for the cells from the grid origin (reference) cell. For the global atmosphere gridded parameter array, the origin reference (longitude, latitude) = (i,j) index pair of (0,0) is equivalent to (-180°,-90°) and occurs at the lower left corner of the grid array.

A.4 Attachment A-4: Example North Polar Gridded Parameter Reference Layout

Example North Polar Gridded Parameter Reference Layout Grid Cell Index Formula Application for Profile Data Gridding



North Polar Grid Cell Index: (longitude index, latitude index)

— closed boundary
- - - open boundary

Reference index point: (0,0) = (-180,90) = the upper left corner

Product: ATL17 – monthly gridded product (polar parameters)

Grid size: polar (polar stereographic): 1.5 degree longitude by 0.5 degree latitude

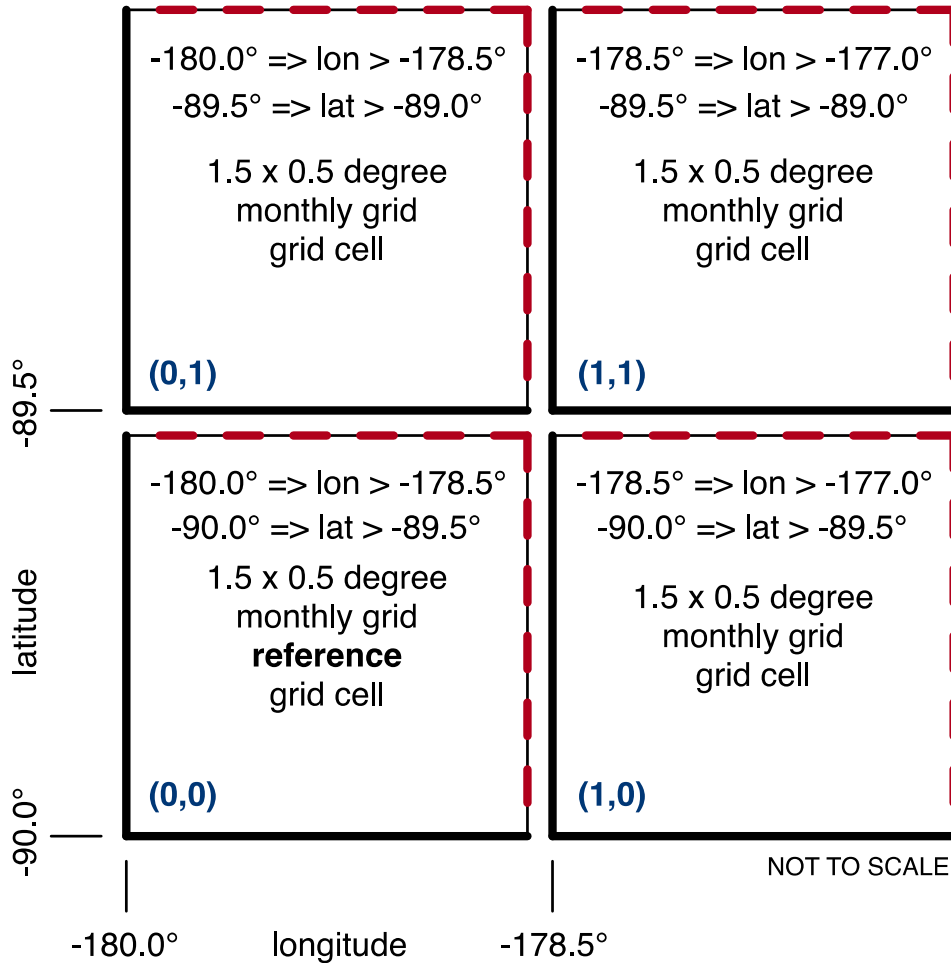
Attachment A-4 Graphical Image Illustrating Section 2.0 North Polar Grid Application and Index Computation for the ATL17 Monthly Gridded Atmosphere Product Parameter

This graphic provides an example image to depict application of the Section 2.0 North Polar (polar stereographic projection) 1.5-degree longitude by 0.5-degree latitude grid cell size and indexing formula for the ATL17 monthly product grid cell mapping with open and closed boundaries indicated for the cells from the grid origin (reference) cell. For the North polar atmosphere gridded parameter array, the origin reference (longitude, latitude) = (i,j) index pair of (0,0) is equivalent to (-180°,90°) and occurs at the upper left corner of the grid array.

A.5 Attachment A-5: Example South Polar Gridded Parameter Reference Layout

Example South Polar Gridded Parameter Reference Layout Grid Cell Index Formula Application for Profile Data Gridding

Monthly South Polar Grid Reference Grid Cell



South Polar Grid Cell Index: (longitude index, latitude index)

- closed boundary
- open boundary

Reference index point: (0,0) = (-180,-90) = the lower left corner

Product: ATL17 – monthly gridded product (polar parameters)

Grid size: polar (polar stereographic): 1.5 degree longitude by 0.5 degree latitude

Attachment A-5 Graphical Image Illustrating Section 2.0 South Polar Grid Application and Index Computation for the ATL17 Monthly Gridded Atmosphere Product Parameter

This graphic provides an example image to depict application of the Section 2.0 South Polar (polar stereographic projection) 1.5-degree longitude by 0.5 degrees latitude grid cell size and indexing formula for the ATL17 monthly product grid cell mapping with open and closed boundaries indicated for the cells from the grid origin (reference) cell. For the South polar atmosphere gridded parameter array, the origin reference (longitude, latitude) = (i,j) index pair of (0,0) is equivalent to (-180°,-90°) and occurs at the lower left corner of the grid array.

This page is
intentionally
left blank.